



KOBE UNIVERSITY

1-1, Rokkodai-cho, Nada-ku, Kobe, 657-8501, JAPAN
March 2024
© Kobe University, all rights reserved.

Kobe U website



Facebook



X (Twitter)



LinkedIn



DISCOVER KOBE U

A global hub for multidisciplinary research and education



Kobe University at a glance

10 faculties **15** graduate schools

Number of students **15,871** as of May 1, 2023

Undergraduate **11,411**
 Graduate **4,460**
 International students **1,291**

International collaboration **373** institutions in **64** countries and regions as of May 1, 2023

Expenditure **84 billion** yen as of FY2022

World rankings

QS World University Rankings 2024

14th in Japan,
476th in the world

THE Impact Rankings 2023

5th in Japan,
101-200th in the world

THE Japan University Rankings 2023 **13**th

Number of books in libraries **3,779,626** as of May 31, 2023

University start-ups

51 as of May 1, 2023

Joint research & commissioned research

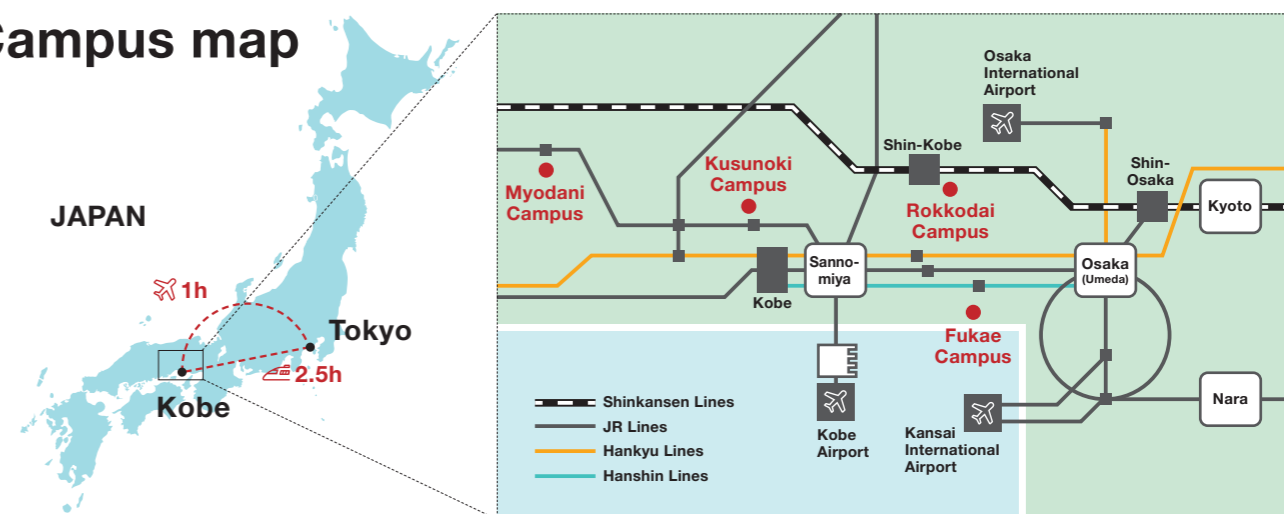
7,494 (2017-2022) Joint research **4,722**
 Commissioned research **2,772**

Since **1902**

Academic calendar

Spring (Apr.-Sep.) ⇄ Fall (Oct.-Mar.)

Campus map



Rokkodai Campus

Faculty of Letters
 Faculty of Global Human Sciences
 Faculty of Law
 Faculty of Economics
 School of Business Administration
 Faculty of Science
 Faculty of Engineering
 Faculty of Agriculture
 Graduate School of Humanities
 Graduate School of Intercultural Studies

Graduate School of Human Development and Environment
 Graduate School of Law
 Graduate School of Economics
 Graduate School of Business Administration
 Graduate School of Science
 Graduate School of Engineering
 Graduate School of System Informatics
 Graduate School of Agricultural Science
 Graduate School of International Cooperation Studies
 Graduate School of Science, Technology and Innovation

Kusunoki Campus

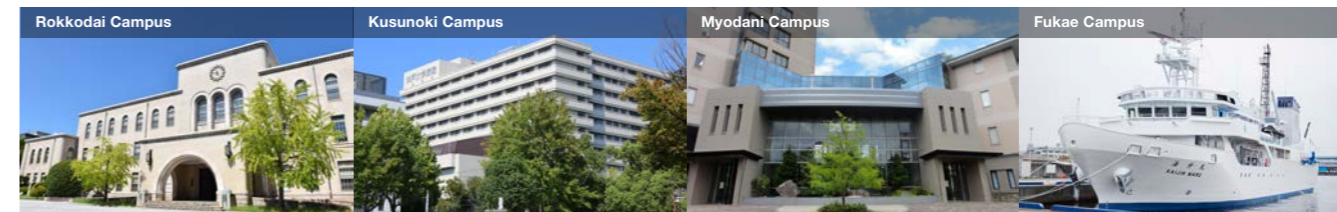
School of Medicine
 Graduate School of Medicine

Myodani Campus

Graduate School of Health Sciences

Fukae Campus

Faculty of Ocean Science and Technology
 Graduate School of Maritime Sciences



Message from the president



We are dedicated to cultivating internationally leading minds for a digital society, to resolve global issues with innovative solutions at the interface of the humanities and the social, natural and life sciences. We foster in our students the ideal of harmony between principle and practice and strive to strengthen social implementation while making every effort to achieve sustainable growth and development. An important part of this is the “Digital Bio & Life Science Research Park” initiative. Centered on the Social System Innovation Research Base, which aims to solve social problems and contribute to society, this initiative will strengthen mutual collaboration between five research bases that embody the university’s strengths. Thus, the co-creation between industry, government and academia aims at the mutual development of Kobe University and society. I hope that this brochure will provide an insight into Kobe University’s vision and activities, bringing about new connections to realize a better world for all.

Bioproduction Research Base

A cutting-edge platform centered on a fusion of bio and digital technologies. Building upon Kobe University’s extensive biotech strengths, this new platform will promote industry-academia-government R&D collaborations for the bioproduction of useful substances.



Medical Engineering Research Base

This research base will develop globally competitive advanced medical devices, covering all stages of development from needs identification, solution conceptualization and validation, to commercialization strategies.



Social System Innovation Research Base

It is necessary to bring innovation to the social system itself so that scientific and technological solutions to social issues will be accepted. We will establish a world-class research base of social system innovation on the two pillars of business platforms and public policy and welfare.



Advanced Membrane Research Base

Japan’s first and only advanced research center specializing in membrane engineering will promote multidisciplinary R&D to establish fundamental membrane science, solving global environmental and energy issues and speeding up the adoption of carbon neutral technologies.



Health and Longevity Research Base

Based on the university’s extensive expertise on health and aging, this base seeks to enhance the well-being of society with its “well-being cross-disciplinary co-creation” model. It aims to become a world-class center that will lead the transition towards a more sustainable society.



Education

We aim to help students realize their individual goals, develop to their full potential and become responsible members of society. Here we introduce a few highlights of the education options available at Kobe University.

Degree programs in English

The graduate schools listed below offer programs conducted entirely in English, enabling students to acquire a full Masters or PhD qualification in Japan without the need for advanced Japanese language abilities.



Social Science	Graduate School of Business Administration Doctoral Program *SESAMI PhD Program*	
	Graduate School of International Cooperation Master’s Program, Doctoral Program *Special Course on Development Policy*	
	KIMAP (Kobe University Interdisciplinary Master Program) Law, Business Administration, Economics	

Science	Graduate School of Science Master’s Program *English-Based Master’s Program*	
	Graduate School of Agricultural Science Master’s Program, Doctoral Program *Kobe Global Graduate Program for Agricultural Science*	
Medical Science	Graduate School of Medicine Doctoral Program *International Program for Medical Research*	
	Graduate School of Health Sciences Master’s Program, Doctoral Program *ICHS Course*	



KIMAP is a unique master’s program that emphasizes interdisciplinary education in business, economics, and law. KIMAP welcomes students not only from Japan but from all over the world, placing international camaraderie as the program’s norm.

	Graduate School of			Field Certificate
	Business Administration	Law	Economics	
International Business Field	→			International Business
Entrepreneurship & Finance Field	→			Entrepreneurship & Finance
Sustainable Development & Public Policy Field	→			Sustainable Development & Public Policy
Degree	Master of Arts in Business Administration Master of Arts in Commerce	Master of Laws	Master of Economics	

Summer schools and short-term Japanese language & culture programs



Kobe University offers language and culture study programs, intensive short-term courses for students studying Japanese at universities sharing academic partnerships with Kobe University. In addition, there are a range of summer schools, organized by the Graduate Schools of Law, Medicine, Health Sciences, and Engineering, to open new perspectives and connections to participants. In particular, the School of Medicine offers a visiting electives program for students of universities with student exchange agreements.

Research

Innovating for the future

Kobe University addresses the challenges facing the world today across all disciplines. Wherever possible we implement new technologies and values that will contribute towards a more sustainable future.

WIERZBOWSKA Agata

Graduate School of Economics



The banking sector and its transmission of monetary policy have wide-reaching effects on the economy. Wierzbowska studies lending practices and efficiency of the banking sector,



especially in Europe, and employs macroeconomic empirical analysis on monetary policy to measure its effectiveness across countries and considers problems of financial stability and integration.

KONDO Tamiyo

Research Center for Urban Safety and Security



Climate change and catastrophic disasters increase risks for housing insecurity and displacement. Kondo studies multi-habitation dynamics as well as recovery and mitigation, post-



disaster placemaking, and adaptive planning approaches in the age of volatility, uncertainty, complexity, and ambiguity, and their effects on residents’ wellbeing and urban dynamics.

SATO Harumi

Graduate School of Human Development and Environment



New materials are key to a sustainable future, whether they are more recyclable or make better use of natural resources. Developing spectroscopy methods is essential to understanding their properties. Sato develops nondestructive spectroscopy

methods to study the degradation of polymer materials from micro- to macroscale. Tachikawa uses single-molecule, single-particle spectroscopy to investigate the mechanisms of chemical reactions at heterogeneous interfaces for a more efficient solar energy conversion. They collaborate for the utilization of waste materials in the production of useful substances.



TAKEDA Minoru

Research Center for Hydrogen Energy Technology



Ocean transportation accounts for 90% of transported goods and for 3% of global greenhouse gas emissions. Takeda explores marine renewable energy creation with experimental studies on superconductivity and cryogenic science for seawater

magnetohydrodynamic power and hydrogen generation, ocean transportation of liquid hydrogen and the clarification of its thermal hydraulic characteristics.



YAMAGUCHI Yuko

Graduate School of Health Sciences



Noncommunicable diseases (NCDs) like diabetes are the leading cause of death and are influenced by lifestyle and culture. Yamaguchi studies Asian societies to find effective prevention and control strategies, especially community-based solutions for people with limited access to adequate healthcare systems. Due to the large impact of lifestyle on NCDs,

her research benefits from her cross-cultural comparisons of causes and solutions.



Corporate relations

Kobe University’s ideal of achieving balance between principle and practice is expressed by the desire to find socially valuable applications for its research results. The university’s Enterprise Partnerships Division is engaged in the creation of joint research between researchers and suitable industry partners, the management of intellectual property, and the fostering of startups. In addition, at the Entrepreneurship Center, the university fosters an entrepreneurial spirit amongst its students.

As a result, many venture companies have been born from Kobe University, in particular in the fields of biotechnology manufacturing and medical-engineering collaboration. The first Japanese surgical robot, Hinotori, was developed at Kobe University in collaboration with Medcaroid and provides more freedom of movement while being more compact than previous systems, in addition to offering a unique high-definition 3D videoscope.

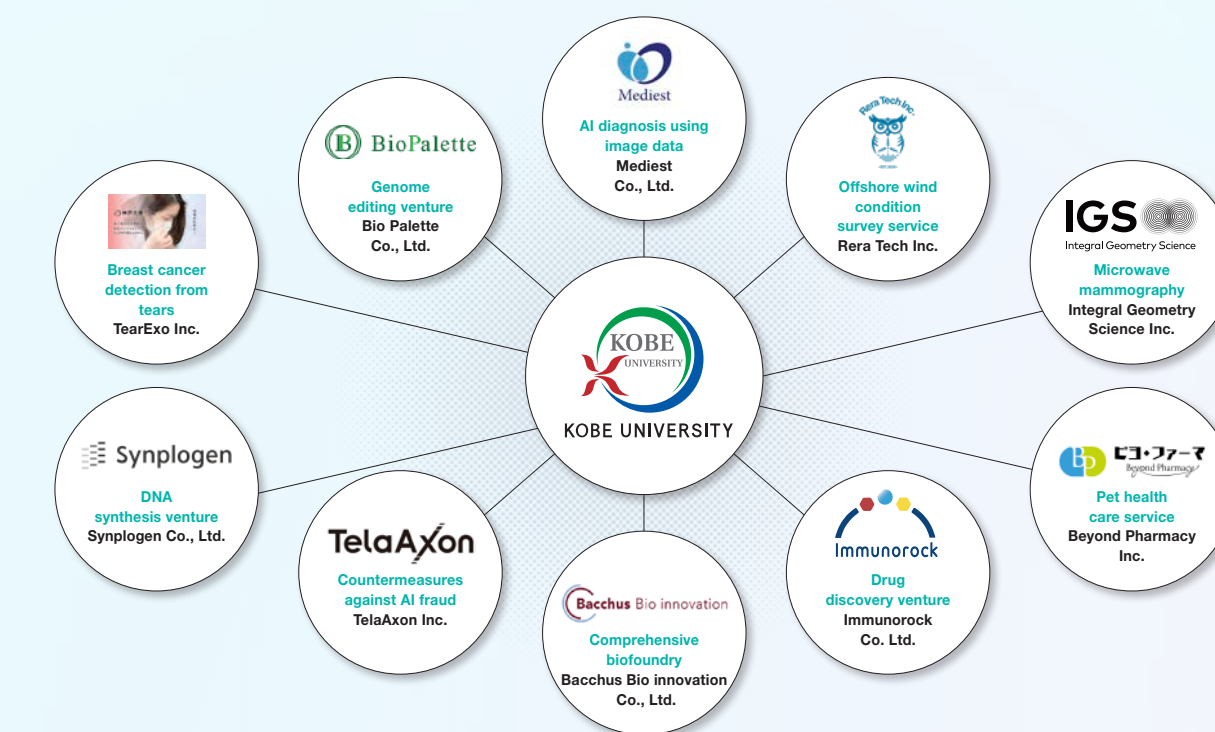
The Industry-Government-Academia Collaboration Division operates a certification system for “Kobe University Ventures” and provides support such as PR and preferential intellectual property licenses to certified companies. In addition, by collaborating with local governments and related organizations, the university contributes to regional revitalization through the creation of venture start-ups in the Kansai region.

The Entrepreneurship Center operates with the three pillars of education, practice and support throughout Kobe University. By providing internationally outstanding entrepreneurship education and practical programs, the center aims to produce independent and creative entrepreneurs. And in the “Kobe University Entrepreneurship Club” for students, mentors provide support and guidance for business plans created by teams of students to nurture future entrepreneurs.



(The finished building may differ from the illustration.)

The Bio Manufacturing Co-Creation Center is a facility currently developed to further promote open innovation and incubation in the field of bio-manufacturing by integrating bio-production engineering and digital technology in the Kobe Biomedical Innovation Cluster.



Many startups have emerged from Kobe University, especially those based on innovative technology and intellectual property in fields where the university is strong, such as bioproduction, advanced membrane engineering, advanced IT, and advanced medicine. The Enterprise Partnerships Division operates a certification system for “Kobe University Startups” and provides support to certified companies, including PR and preferential intellectual property licensing. In addition, by partnering with local governments and related organizations through initiatives such as the Hyogo Kobe Startup Ecosystem Consortium, a Cabinet Office-designated “hub city,” we are contributing to the regional revitalization of the Hyogo-Kobe and Kansai regions through the creation of startups.