



 **KOBE UNIVERSITY**

1-1, Rokkodai-cho, Nada-ku, Kobe, 657-8501, JAPAN
<http://www.kobe-u.ac.jp/en>

©Kobe University. All Rights Reserved.

KOBE UNIVERSITY

神戸大学 2018-2019



Rokkodai 2 Campus



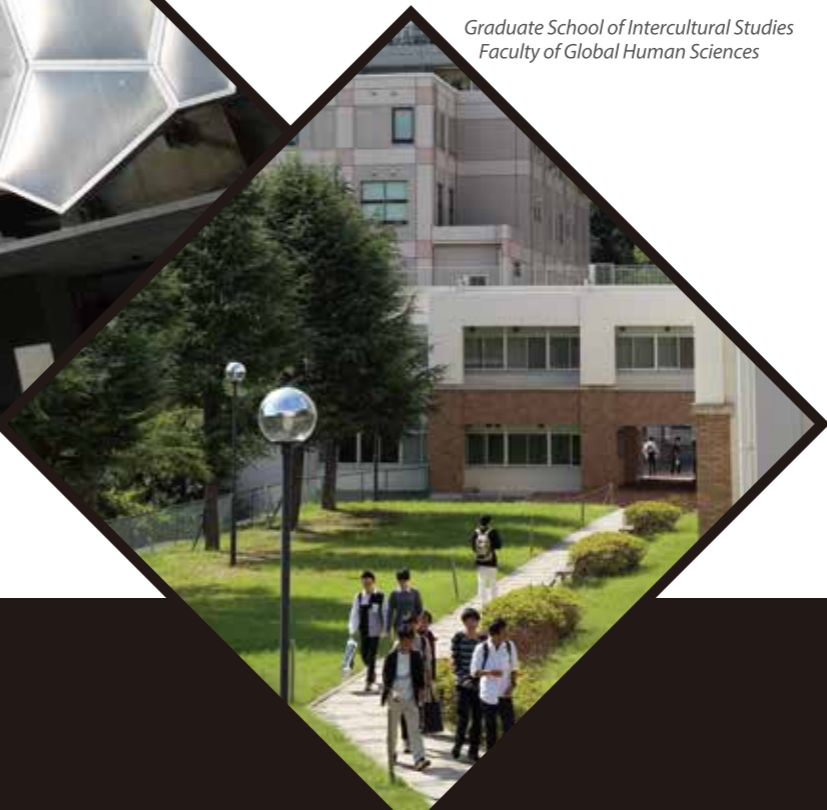
Tsurukabuto 1 Campus



Centennial Hall



Center for Membrane and Film Technology



Graduate School of Intercultural Studies
Faculty of Global Human Sciences

Message from the President

As the president of one of the oldest leading universities in Japan, I would like to extend to you a warm welcome.

Founded over 110 years ago in a cosmopolitan city, Kobe University encourages an enterprising spirit and independent thinking. While upholding its traditions, the University is committed to the creation of knowledge and new values through interdisciplinary approaches, and to solving the issues facing our society. We are proud that Professor Shinya Yamanaka, a Nobel Laureate in Physiology or Medicine who has made tremendous contributions to the improvement of human life throughout the world, studied here during his undergraduate education.

As one of the most comprehensive universities in Japan, with departments covering the humanities, social, natural, and biomedical sciences, Kobe University promotes innovative research and education in collaboration with other universities, research institutes, and industry in Japan and abroad. The Integrated Research Center of Kobe University serves as a core base for the pursuit of advanced research, housing 12 flagship research projects.

In December 2017 we founded the Center for Mathematical and Data Sciences for research on AI, data science and related technologies, and to train people who will lead our future data-driven society. In April 2018 the Graduate School of Science, Technology and Innovation began a new doctoral program, welcoming students with experience in research and development. Opened in 2016, the Graduate School has already established three startups based on research seeds. With these new programs and initiatives the University aims to provide solutions to the challenges facing our changing global society.

I extend an invitation to all students, researchers, the public and private sectors, and all people and organizations interested in studying at or collaborating with Kobe University.

TAKEDA Hiroshi
President

Contents

Message from the President	01
At A Glance	02-03
Research: Working with society, for society	04-05
Researchers at Kobe	06-07
International	08-09
Education	10
Student Voices	11
Support Services	12-13
About Kobe	14-15
Faculties & Schools	16-17
Graduate Schools & Affiliated Centers	18-19
Centers, Institutes & Facilities	20
Organization Chart	21



Initiative for Excellence

The title of Kobe University's vision expresses our goal to benefit society through outstanding research. The logo represents interdisciplinary collaboration between different academic fields to solve current and future social issues.

Kobe University At A Glance

10 Faculties **15** Graduate Schools

25 Research Centers **10** Libraries

4 Campuses

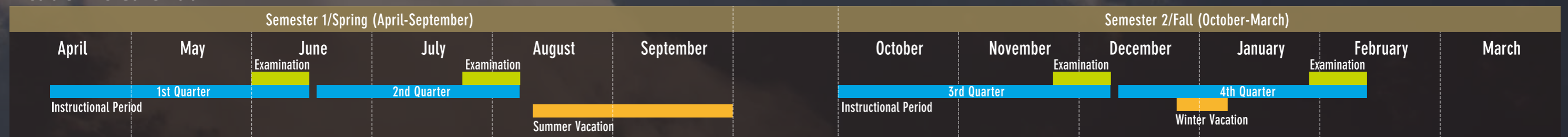
Founded in **1902** (oldest school of commerce in western Japan)

Staff **3,680** **1,704** Teaching Staff
 1,976 Administrative Staff (including technical staff and nurses)

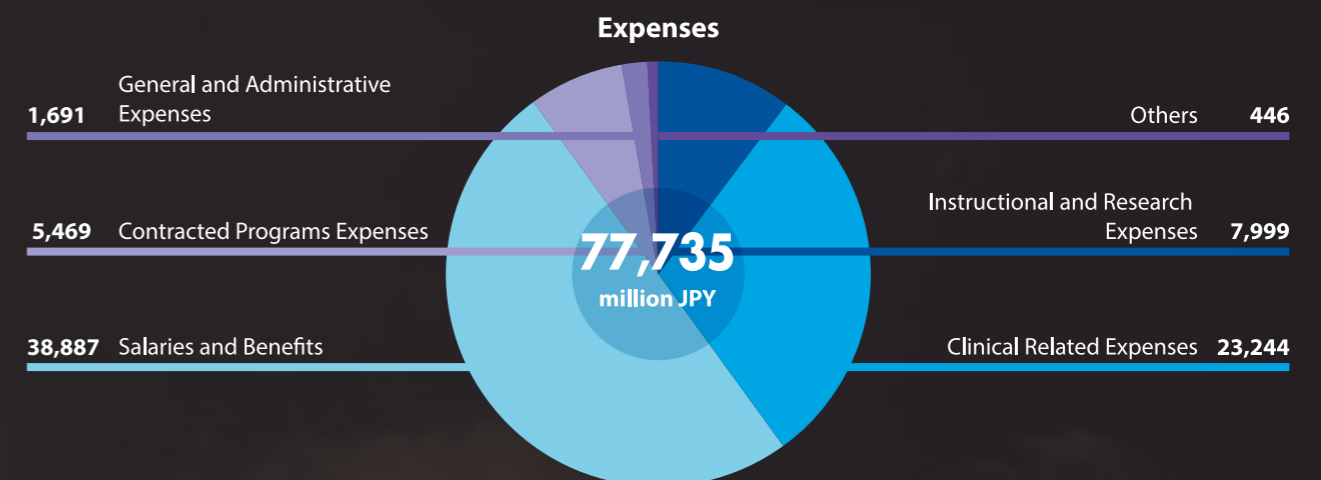
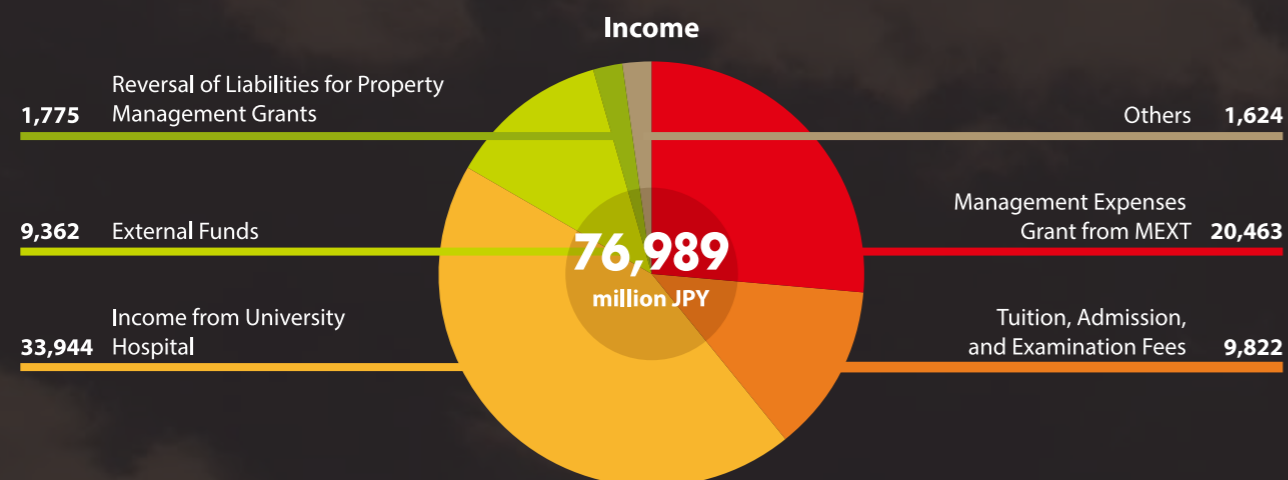
Students **16,256** **11,596** Undergraduate Students
 4,660 Graduate Students
 1,303 International Students

Mobility **242** Exchange Students
 960 Outbound Students
 702 Visiting Researchers/Faculty Members
 2,823 Outbound Researchers/Faculty Members

Academic Calendar



Financial Highlights



Research



Working with society, for society

As stated in President Takeda's April 2015 Vision, Kobe University pledges to become an outstanding research university excelling in advanced and integrated research in the humanities and sciences, and serving as a center for value creation that will help to solve the issues facing our society both at present and in the future.

We are focusing in particular on research topics that can solve social issues by taking advantage of the University's strengths in the humanities and social sciences. As part of this program, we have established a unit on Multidisciplinary Integration for Resilience and Innovation (MIRAI) within the Organization for Advanced and Integrated Research (see next page). The MIRAI unit uses an interdisciplinary approach to examine cities for the future, contributing to the design of a new living environment that is resilient against external risks and disasters.

Kobe University is involved in research projects in collaboration with research organizations and private companies, as well as local and national government. The Innovative Bio-Production Kobe project and the internationally-renowned Center for Membrane and Film Technology are notable examples. The University has a strong presence on Port Island as part of the Kobe Biomedical Innovation Cluster, facilitating collaboration with national research institutions such as RIKEN as well as organizations within Kobe city. Our joint projects also focus on medical innovation. In 2017 we established the International Clinical Cancer Research Center, and the University is working with Foundation for Kobe International Medical Alliance to establish a "Medical Device Innovation Platform".

Research Spotlight

Organization for Advanced and Integrated Research

The Kobe University Organization for Advanced and Integrated Research was established to promote cutting-edge, interdisciplinary research that is not limited by the boundaries of humanities or sciences. The Organization is made up of research projects and research units belonging to three divisions: the Division of Life, Medical, Natural Sciences and Technology, the Division of Social Sciences and Humanities, and the Division of Integrated Research. In 2017 we established a new unit on Multidisciplinary Integration for Resilience and Innovation (MIRAI) to promote cross-disciplinary research on disasters. This new unit encompasses the disciplines of humanities, sciences and medicine.

By focusing on these research projects, the Organization for Advanced and Integrated Research pledges to engage in world-class research that contributes to the solution of social problems and the development of science and education in Japan.

info <http://www.oair.kobe-u.ac.jp/>



Research Institute for Economics and Business Administration



Established in 1919 as the Commercial Research Institute of the Kobe Higher Commercial School, the Research Institute for Economics and Business Administration (RIEB) has the longest history of all social science research institutes affiliated to national universities in Japan.

For further details regarding RIEB, please visit our website at:

info <http://www.rieb.kobe-u.ac.jp/index-e.html>

Our primary objective is to advance the frontiers of academic research in the fields of economics and business administration, emphasizing publications in international refereed journals. In 2011, RIEB launched The Japanese Accounting Review (TJAR), currently the only international refereed journal in accounting based in Japan.

Another important objective of RIEB is to collect and maintain historically valuable materials. The affiliated Integrated Center for Corporate Archives collects and maintains historical documents pertaining to business administration. Our collections include highly-regarded archives such as the "Kanebo Collection" and the "Kanematsu Collection." In 2014, the RIEB Business Mechanization Exhibition was certified as a 'Satellite Museum of Historical Computers' by the Information Processing Society of Japan.



Research at Kobe

Visit Research at Kobe for more information:

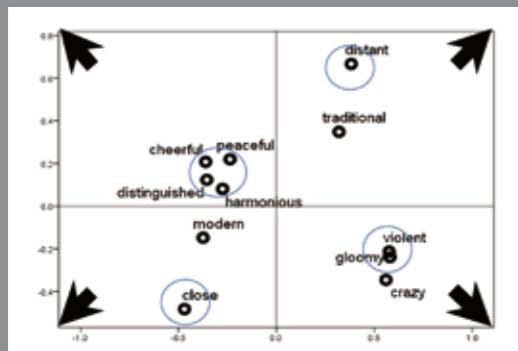
info http://www.kobe-u.ac.jp/research_at_kobe_en/index.html

Researchers at Kobe

Japanese Pop Culture Lost and Found in Translation

Japanese pop culture is traveling around the world. By survey research distributing questionnaire sheets at the sites of events such as Animation and Comic (Manga) festivals in Asian areas, I have collected data on how the people outside Japan accepted J-POP, and what kind of mindset is involved in the process. With young colleagues I formed a team and we shared the data on the same topic in the same format collected by a team called European Manga Network which conducted the research in Europe. We did comparative analysis of the two data sets. The results are indicated as follows. We used principal component analysis in which the elements plotted more distant from the center are more 'material' and important. I hope that the figures puzzle you, and for a more detailed explanation please invite me to your university for a discussion!

Image of Japan in East Asia through Manga Reading



Created / figures by N. Hayami and T. Hirai

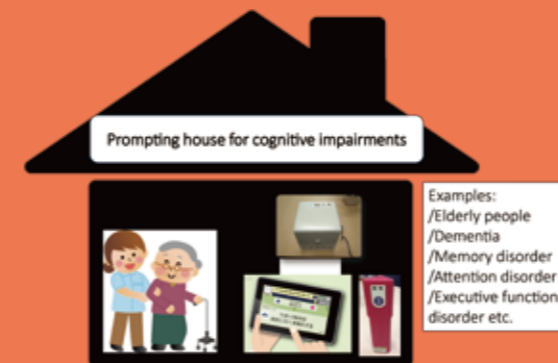
Kiyomitsu Yui

Professor, Graduate School of Humanities

<http://www.lit.kobe-u.ac.jp/english/faculty/kiyomitsu-yui.html>

Developing a "prompting house" for improved cognitive function

We are researching the development of evaluations, interventions and assistive technologies for people who have dementia or higher brain dysfunctions. As part of this, we collaborate with organizations in industry, government and academia such as the Karolinska Institutet and Kobe City. My profession is as an occupational therapist who intervenes and supports patients' daily lives. We have been developing programs for preventing dementia as well as various assistive technologies (ATs) like a multi-remote control, a sensor to prevent loitering, and applications for memory aid. Our ATs are very useful for our clients, changing their lives and supporting not only the clients but also their families. Taking advantage of our findings, we also would like to support ASEAN countries where ageing is an issue such as Vietnam and Indonesia, in collaboration with the Japan International Cooperation Agency and the World Health Organization.



Rumi Tanemura

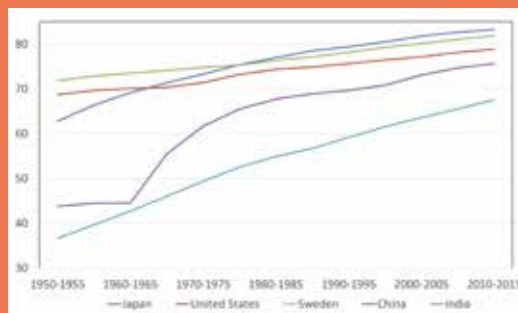
Professor, Graduate School of Health Sciences
Manager of Frontier Center for Asian Health Science

<http://www.ams.kobe-u.ac.jp/en/member/>

Population and Economy

Population and economy are significantly related to each other. Using the methods of economics, I examine the influence of demographic change on the economy both theoretically and empirically. The effects of longer adult life expectancy in particular have recently attracted the attention of economists and demographers. Known as the second demographic dividend, longer adult life expectancy increases savings and it can induce economic development. In many developed countries including Japan, population aging can decrease the labor force and cause serious problems related to social security, but longer life expectancy may also have positive effects on the economy and it is important to take advantage of these. Population is also linked to various other aspects of society and very interesting research areas. I am also researching the impact of demographic change on education, trade and agriculture.

Life Expectancy at Birth, Both Sexes, 1950-2015



(Data Source) United Nations, Department of Economic and Social Affairs, Population Division (2017). World Population Prospects: The 2017 Revision, DVD Edition.

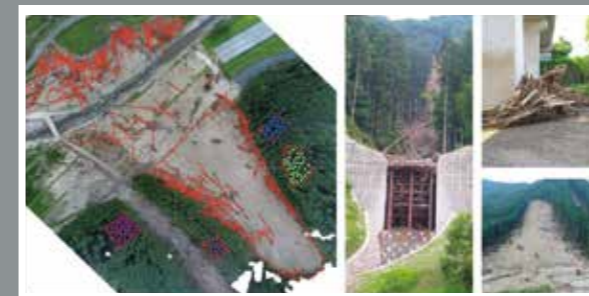
Tomoko Kinugasa

Professor, The Center for Social Systems Innovation

<http://www2.kobe-u.ac.jp/~kinugasa/>

Heavy Rainfall Debris-Flows and Floods in Japan: Environmental and Geo-hazard Solutions for an Ageing Population Facing Climate Change Effects

Landslides, debris flows and floods are on the rise in Japan due to climate-change, and also due to an ageing and dwindling rural population. The latter has translated into increased forested land, abandoned slopes and consequently new sediment sources, sediment transfer rhythms, and hazards. As population concentrates in cities, it still relies on the countryside for its livelihood and economic aspects like forestry, hydroelectricity, etc. It is therefore essential to develop new management practices, which are environmentally sound, which reduce hazards, and which are not man-power intensive. With an international team of researchers in Europe and East Asia, we attempt to better understand the newly arising slope dynamics using shallow geophysics, surface and vegetation data remote sensing, as well as data crunching relying on artificial intelligence methods and physical modelling.



UAV imagery of the 2017 Asakura debris-flow and wood debris disaster in Northern Kyushu (Japan). The drifted wood was floated in the river system acting as rams in downstream dwellings and infrastructures.

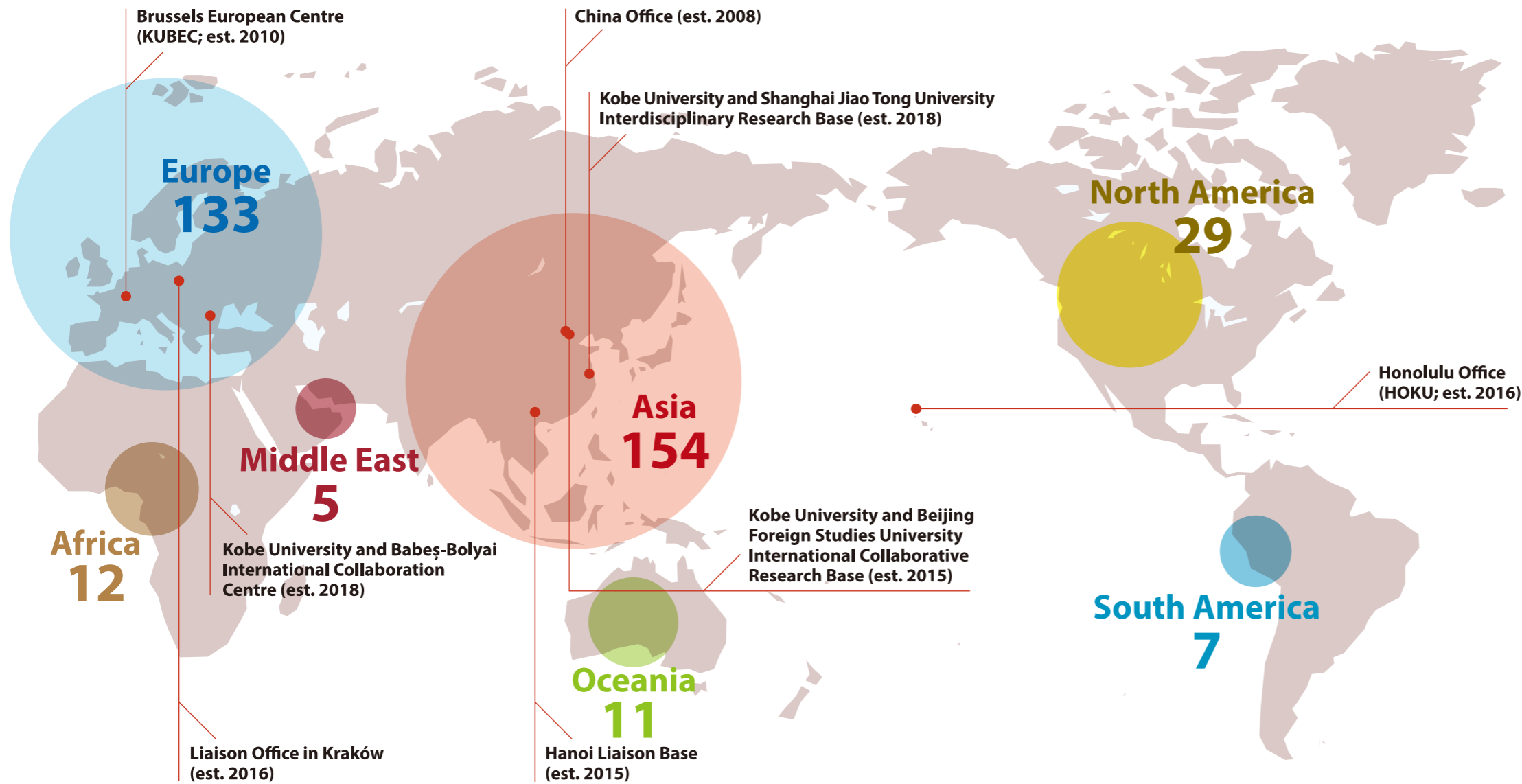
Christopher Gomez

Associate Professor,
Graduate School of Maritime Sciences

<http://www.research.kobe-u.ac.jp/gmsc-geosciences-volcanic-disaster-risk/>

International

Partner institutions and overseas bases



Hub Campus

Kobe University is strengthening its global competitiveness through four core bodies established by the Institute for Promoting International Partnerships: the Centre for EU Academic Collaboration, the Center for Asian Academic Collaboration, the Office of the Americas and the Center for International Education. Each Center implements initiatives for interdisciplinary collaboration and international programs.

Kobe University promotes the mutual exchange of students and researchers worldwide. We currently have 351 partner institutions in 63 countries/regions. To enhance our collaboration with higher education institutions, we proactively participate in research and education support schemes by the European Commission such as Horizon 2020 and Erasmus+. Kobe University has developed strong partnerships in Europe by serving as the coordinating university for the EU Institute in Japan, Kansai since 2005, and establishing the Kobe University Brussels European Centre in 2010. Our flagship collaborations in Asia include Indonesia-based joint research on emerging and re-emerging infectious diseases.


In education, the CAMPUS Asia program fosters risk management experts in East Asia, while the KUPES program trains EU specialists. Student mobility is vital for a diverse, global learning environment, and our goal is an intake of 2000 international students and 1,200 outgoing students every year.


In 2018 we established two new overseas offices, in Cluj-Napoca, Romania and Shanghai, China. Both are physically located in Kobe University as well as overseas. Using these bases alongside other initiatives, we aim to serve as a hub connecting overseas institutions, corporations, and public organizations based in Kobe and abroad.


http://www.office.kobe-u.ac.jp/ipiep/index_en.html


International Activities


A selection of international activities from the past year.


 **September 28, 2017**
 The Fifth Annual Conference: The Forum for Leaders of Japanese Studies
http://www.kobe-u.ac.jp/en/NEWS/info/2017_10_25_01.html


 **November 21, 2017**
 The Eighth Kobe University Brussels European Centre Symposium
http://www.kobe-u.ac.jp/en/NEWS/info/2017_12_05_01.html

 **February 5, 2018**
 The Second Honolulu Office of Kobe University Symposium
http://www.kobe-u.ac.jp/en/NEWS/info/2018_02_15_02.html

 **June 23, 2017**
 The Second Kobe University–Beijing Foreign Studies University Joint Symposium
http://www.kobe-u.ac.jp/en/NEWS/info/2017_07_10_01.html

 **October 19, 2017**
 Visegrad Project Kick-Off Symposium
http://www.kobe-u.ac.jp/en/NEWS/info/2017_11_06_01.html

 **November 23, 2017**
 Seminar held with Casa Asia in Barcelona on healthy and active ageing
http://www.kobe-u.ac.jp/en/NEWS/info/2017_12_07_01.html

 **March 9, 2018**
 University of Southern California x Kobe University 2nd Joint Research Symposium
http://www.kobe-u.ac.jp/en/NEWS/info/2018_05_22_02.html

Education



Thinking globally

Kobe University aims to educate people who can identify and solve issues on a global scale. The “Kobe Standard” of education is based on the three skills of critical, collaborative and global thinking.

Academic calendar

The academic year at Kobe University is divided into 4 terms, known as “quarters”. This gives students more flexibility to participate in overseas exchange programs and internships.

Kobe University Educational Program on Current Japan (KU-EPOCJ)

The Kobe University Educational Program on Current Japan is an English / English & Japanese-taught course established in April 2016. It is open to exchange students at both undergraduate and graduate levels. The course focuses on current issues in Japan covering a broad range of disciplines, including social sciences, humanities, and natural sciences. Providing opportunities for a deeper understanding of Japan from various perspectives, this program can be combined with students’ specialist fields and Japanese language classes at the Kobe University Center for International Education.

Programs taught in English

We are increasing the English-taught, globally-oriented programs at Kobe University, with the ultimate goal of 10% English-taught programs. As well as a wide selection of English-taught classes, the University also offers postgraduate programs fully conducted in English. These include the Global Master’s Programs in Law, Management, and Economics and an international course in health sciences.

Bachelors programs in Japan are typically four years long, masters are two years, and doctoral courses last for three years.

Short-term summer programs are also provided by departments such as Law, Medicine, Health Sciences, Engineering, and cross-department initiatives including a course in advanced science and technology. They last from one to three weeks – see the University website for details.

Student Voices

Letrone William

*Graduate School of International Cooperation Studies
France*

Writing a Master thesis couldn’t be as pleasant as in Japan, and Kobe especially. Excellent transportation, entertainment, many restaurants and beautiful places to visit in and around the city will allow you to spend a good year of study. The study environment is first class as well. From the number of books provided by the library to the equipment dedicated for students’ research, I’m very satisfied by the general support given by the university to foreign students. The personal support for foreigners is also very accommodating. Tutors and supervisors are attentive to our experience in Kobe, whether as a student or as a foreigner. As a Japanese culture lover, I like to visit traditional Japanese areas, eating and hanging outside with my friends during free time. Even after the first months, there are still many things to discover in Kobe.



Ayane Kuwajima

*Faculty of Law
Japan*

I am a member of the Kobe University Programme for European Studies (KUPES). The KUPES curriculum is aimed mainly at Japanese students who are interested in deepening their knowledge about Europe and studying abroad, but international students can also join some classes. There is plenty of language exchange in Japanese and students’ native languages, and for international students it’s a good opportunity to make friends and improve your Japanese. I often go to Kyoto or Nara at the weekends with students I have met through KUPES. Every week there are active discussions in class, and it’s a lot of fun getting to know people from different cultures and backgrounds. I look forward to meeting more people from around the world.



Fan Rong

*Graduate School of Science
People’s Republic of China*

I have been in Kobe for one year already and looking back on this year of my college life, I have not only gained an abundant knowledge of chemistry but also plenty of things that I can’t get from books. During my time at Kobe University, I have learned how to deal with affairs efficiently and how to respect and embrace cultural difference, skills that will also be a great help in other parts of my life. I cherish every moment and hope that I can use this opportunity to focus on making myself a better person. I sincerely believe that each person’s future depends on our capability as well as our choices. At the moment, I wish to make progress in my own studies and make each day count with my reliable and lovely companions.



Support Services



Library for Social Sciences



Centennial Hall

University Libraries

Kobe University Library has a collection of about 3,700,000 bibliographical materials. The Library is comprised of the General Library and 9 branches divided by subject. They are located in the Rokkodai, Kusunoki, Myodani, and Fukae campuses. Each library provides a wide range of books and journals for students and faculty to advance their education and assist their research. They can also use the online delivery service to order books from other campus libraries. Moreover, convenience is improving for students, such as discussion-based learning at the Learning Commons. In 1999, "Digital Library System" was launched. It provides digitized collections for users inside and outside the campus via the internet (<http://www.lib.kobe-u.ac.jp/da/e-index.html>). "The Earthquake Disaster Materials Collection (EDMC)" holds over 50,000 materials related to the Great Hanshin-Awaji Earthquake. The EDMC is open to the public, with the aim of contributing to the development of earthquake-related research such as emergency restoration and disaster prevention measures.



Library for Science and Technology

info Email: www-admin@lib.kobe-u.ac.jp
<https://lib.kobe-u.ac.jp/en/>

For International Students and Researchers

International Student Section in the Center for International Education (CIE)

The International Student Section in the CIE (formerly the International Student Center) was established as a university-wide research and teaching facility in April 1993. The Section assumes overall responsibility for international students, including the provision of Japanese language instruction, Japanese studies courses, advice on studying and living in Japan, career advice, and alumni networking. The Section also undertakes research and development to promote international study exchange programs, such as supporting Japanese students at Kobe University wishing to study overseas. In addition, the Section actively promotes international exchange programs in the local community, working with regional government agencies, local volunteer organizations, schools and companies.

info <http://www.kisc.kobe-u.ac.jp/english/>

Accommodation

Kobe University has several dormitories for international students and researchers located within commuting distance. Kobe University International Residence and International House are exclusively for international students and researchers, however, other dormitories are for both international and Japanese students at Kobe University. The resident fees vary by room type. There are also boarding houses run by public and private organizations available for international students and researchers.

Rent Subsidy System

Kobe University has a rent subsidy system for eligible international researchers who agree to live in one of the public-run apartments designated by the University in the event there is no room available in either the International Residence or International House. Under this system, the University will pay approximately half the monthly rent. However, residents themselves must pay utilities.

Welfare

Medical Center for Student Health

The Medical Center for Student Health was established in April 1970. Services provided by the Center include an annual medical checkup for all students and staff, special checkups for people working with X-ray, radioisotope and other harmful substances, as well as a medical checkup for new international students. Emergency medical treatment is also available. There are doctors and nurses as well as counsellors to provide consultation and advisory services on physical and mental well-being. The Medical Center for Student Health also plays an important part in creating a safe and hygienic educational environment, through Health and Safety activities administered by qualified doctors.

info <http://www.health.kobe-u.ac.jp/>

Support Center for Campus Life

This Center provides consultations and assistance in cases when a member of the University is experiencing disability-related difficulties or worries regarding their studies or university life. We will work with your department to meet your needs, including support for lectures, course registration, and examinations.

info <http://www.kobe-u.ac.jp/SCCL/>

Residence	Commute	Map
1 International Residence	To Rokkodai Campus, 30-40 min. by Port-liner and Hankyu train	
2 International House (Fukae area)	To Rokkodai Campus, about 50 min. by train and bus To Fukae Campus, about 8 min. on foot	
3 Sumiyoshi International Student House (students only)	To Rokkodai Campus, 40-50 min. either on foot or by bus and train	
4 Sumiyoshi Residence (male students only)	To Rokkodai Campus, 40-50 min. either on foot or by bus and train	
5 Joshi-Ryo (female students only)	To Rokkodai Campus, 40-50 min. either on foot or by bus and train	
6 HAKUO Dormitory (Fukae area) (students only)	To Rokkodai Campus, about 50 min. by train and bus To Fukae Campus, about 10 min. on foot	
7 KOKUI Residence (students only)	To Rokkodai Campus, 30 min. by bus and on foot	

About Kobe

“Perched on a hillside sloping down to the sea, Kobe is one of Japan’s most attractive and cosmopolitan cities.” – Lonely Planet

Kobe is the capital of Hyogo Prefecture, located in the western part of Japan’s main island of Honshu. Sandwiched between the Rokko mountain range to the north and the Inland Sea to the south, the city is blessed with a mild climate averaging 17.1°C (62.8F) with four seasonal changes. It has a population of over 1.5 million including 43,000 foreign residents from as many as 132 different countries.

Accessible by land, air and sea, Kobe is a hub for other domestic and international destinations: Kyoto, Himeji, Osaka and Nara are all within easy reach, and Tokyo is a short bullet train or plane ride away.

Kobe University’s four campuses and accommodation are all easily accessible from the city center of Sannomiya by bus and train.

A multicultural port city

Ever since Japan was opened to the world, Kobe has been a cosmopolitan port city where people, goods, and information from around the globe are in constant motion. This has made the city home to a rich blend of

Japanese tradition and international influences. In the city center you can find Ikuta Shrine, founded in the third century, with historical foreign residences and Japan’s oldest mosque just a short walk away. On the other side of the mountains lies Arima Onsen, one of Japan’s oldest hot spring resorts.

Kobe’s history of cultural exchange has contributed to its diverse arts scene: it is the birthplace of Japanese jazz. In 2008 Kobe joined UNESCO’s Creative Cities Network as a City of Design. The city’s cuisine also shows culinary influence from around the world. As well as the renowned Kobe beef and Japanese sake breweries, Kobe is also well-known for its bustling Chinatown near the Port of Kobe, numerous bakeries and European-inspired sweets.

Located between the mountains and the sea, Kobe is an ideal location to explore Japan’s natural surroundings. Hiking trails and cable cars from the city provide transport to the peaks of the Rokko mountains and Kobe’s famous night view. A few kilometers west from the Port of Kobe are the sandy beaches of Suma and Maiko, popular for watersports in summer.

Location



Industry and innovation

Kobe and the surrounding area suffered heavy damage from the 1995 Great Hanshin-Awaji Earthquake. In following years, with support from people throughout Japan and the world, Kobe’s citizens have rebuilt the city into a hub for business and industry.

Traditionally home to heavy industries such as shipbuilding, iron and steel, the city is now home to industries using IT, science and technology. At the center of this is the Kobe Biomedical Innovation Cluster on Port Island where nearly 350 research institutes, corporations

and universities are working together to develop state-of-the-art medical technology and research into integrated medical-related industries. The Cluster is home to the K computer, one of the fastest supercomputers in the world, and SPring-8, the world’s largest third-generation synchrotron radiation facility.

Kobe also has a high concentration of foreign-affiliated companies and international organizations: the World Health Organization and the Japan International Cooperation Agency are both based in the city center.

Faculties & Schools



	Courses
Letters http://www.lit.kobe-u.ac.jp/english/index.html	Humanities
Global Human Sciences http://www.fgh.kobe-u.ac.jp/index.php/en	Global Cultures Human Development and Community Environment and Sustainability Child Education
Law http://www.law.kobe-u.ac.jp/english.html	Law (includes Politics)
Economics http://www.econ.kobe-u.ac.jp/en/	Economics
Business Administration http://www.b.kobe-u.ac.jp/en/	Business Administration
Science http://www.sci.kobe-u.ac.jp/english/index.htm	Mathematics Physics Chemistry Biology Planetology
Medicine http://www.med.kobe-u.ac.jp/en/index.html http://www.ams.kobe-u.ac.jp/en	Medicine Health Sciences
Engineering http://www.eng.kobe-u.ac.jp/en/	Architecture Civil Engineering Electrical and Electronic Engineering Mechanical Engineering Chemical Science and Engineering Computer Science and Systems Engineering
Agriculture http://www.ans.kobe-u.ac.jp/english/index.html	Agricultural Engineering and Socio-Economics Bioresource Science Agrobioscience
Maritime Sciences http://www.maritime.kobe-u.ac.jp/index_e.html	Global Transportation Sciences Ocean Safety Systems Science Marine Engineering

Graduate Schools



Kobe University has 15 graduate schools covering a wide range of disciplines.
All courses are offered at both masters and doctoral levels unless otherwise specified.

Courses

Humanities http://www.lit.kobe-u.ac.jp/english/index.html	Human Cultural Studies Human Social Dynamics
Intercultural Studies http://web.cla.kobe-u.ac.jp/graduate-en/	Cultural Interaction Culture and Globalization
Human Development and Environment http://www.h.kobe-u.ac.jp/en/	Human Development Human Environmental Science
Law http://www.law.kobe-u.ac.jp/english.html	Professional Degree Program: Professional Legal Studies Law and Politics
Economics http://www.econ.kobe-u.ac.jp/en/	Economics
Business Administration http://www.b.kobe-u.ac.jp/en/	Business Administration MBA Program: Research-Based Education
Science http://www.sci.kobe-u.ac.jp/english/index.htm	Mathematics Physics Chemistry Biology Planetology
Medicine http://www.med.kobe-u.ac.jp/en/index.html	Biomedical Sciences (Masters course only) Medical Sciences (Doctoral course only)
Health Sciences http://www.ams.kobe-u.ac.jp/en/	Nursing Biophysics Rehabilitation Science Public Health
Engineering http://www.eng.kobe-u.ac.jp/en/	Architecture Civil Engineering Electrical and Electronic Engineering Mechanical Engineering Chemical Science and Engineering
System Informatics http://www.csi.kobe-u.ac.jp/english/index.html	Systems Science Information Science Computational Science

Courses

Agricultural Science http://www.ans.kobe-u.ac.jp/english/index.html	Agricultural Engineering and Socio-Economics Bioresource Science Agrobioscience
Maritime Sciences* http://www.maritime.kobe-u.ac.jp/index_e.html	Maritime Sciences
International Cooperation Studies http://www.gsics.kobe-u.ac.jp/	Economic Development and Policies International Cooperation Policy Studies Regional Cooperation Policy Studies
Science, Technology and Innovation http://www.stin.kobe-u.ac.jp/en/index.html	Science, Technology and Innovation

*Note: The Graduate School of Maritime Sciences also offers a Sea Training Course, with two departments of Nautical Science and Marine Engineering.

Affiliated Research Centers

Intercultural Studies	Research Center for Promoting Intercultural Studies (Promis)
Science	Center for Planetary Science
Medicine	Institute for Experimental Animals Center for Infectious Diseases Center for Advancement of Community Medicine International Clinical Cancer Research Center
Engineering	Center for Membrane and Film Technology Research Center for Interfacial Science (RCIS) Complex Fluid and Thermal Engineering Research Center (COFTEC) Research Center for Advanced Smart Materials (RCASM) Resilient Structure Research Center (ReSRC) Medical Device Fabrication Engineering Center (MeDFEC) Center for Resilient Design (CResD)
Agricultural Science	Food Resources Education and Research Center Center for Regional Partnership Research Center for Food Safety and Security (RCFSS)
Maritime Sciences	International Maritime Research Center (IMaRC)

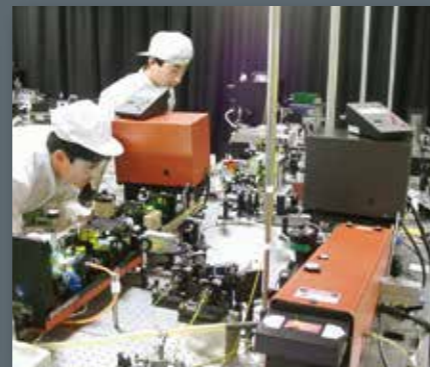
Centers, Institutes & Facilities

Core Research Centers

- **Biosignal Research Center**
<http://www.biosig.kobe-u.ac.jp/index.html>
- **Research Center for Inland Seas**
<http://www.research.kobe-u.ac.jp/rcis-kurcis/e.html>
- **Research Center for Urban Safety and Security**
<http://www.rcuss.kobe-u.ac.jp/English/index-e.html>
- **Molecular Photoscience Research Center**
<http://www.research.kobe-u.ac.jp/mprc/>
- **Kobe Ocean-Bottom Exploration Center**
<http://www.k-obec.kobe-u.ac.jp/>
- **Kobe University Center for Social Systems Innovation**
<http://cfssi.kobe-u.ac.jp/index-e.html>
- **Center for Mathematical and Data Sciences**
<http://www.cmds.kobe-u.ac.jp/en/>
- **Center for Computational Social Science**
<http://www.rieb.kobe-u.ac.jp/ccss/>
- **Engineering Biology Research Center**



Biosignal Research Center



Molecular Photoscience Research Center



Information Science and Technology Center (ISTC)



Institute for Promotion of Higher Education

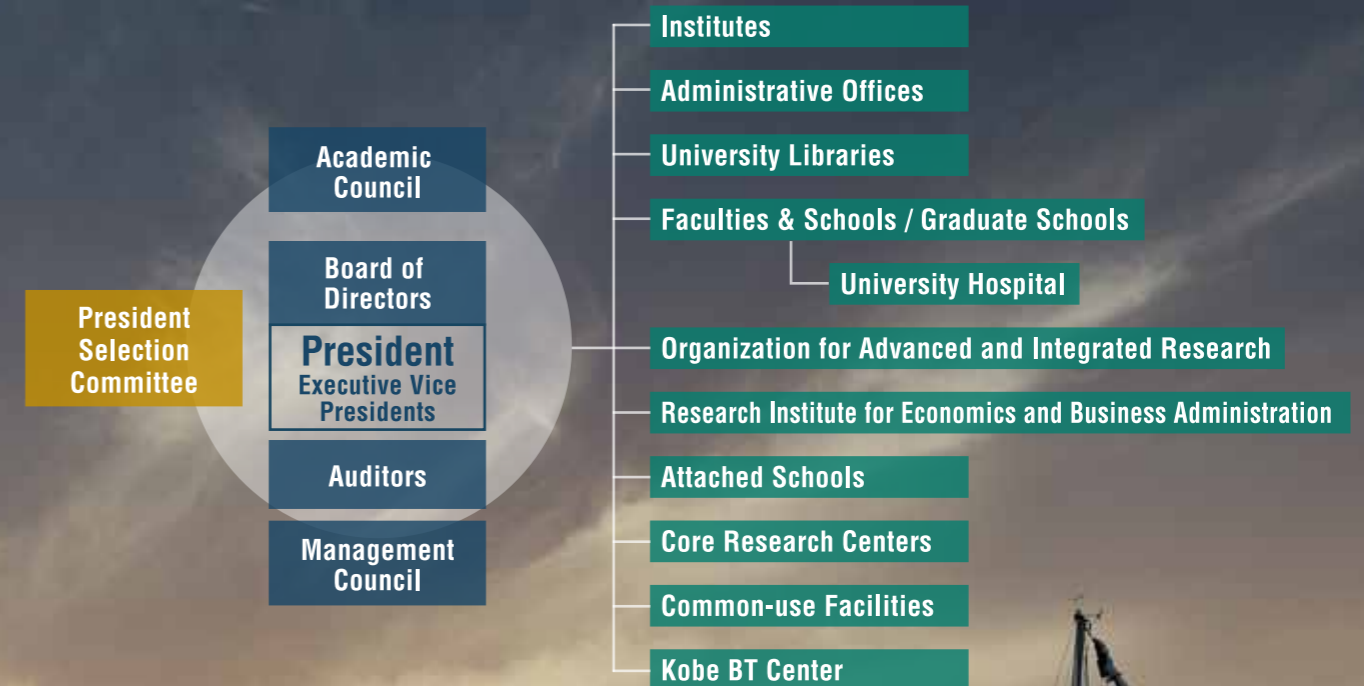
Common-use Facilities

- **Information Science and Technology Center**
<http://www.istc.kobe-u.ac.jp/>
- **Office for Academic and Industrial Innovation**
<http://www.innov.kobe-u.ac.jp/>
- **Research Facility Center for Science and Technology**
<http://www.csrea.kobe-u.ac.jp/>
- **Center for Environmental Management**
<http://www.research.kobe-u.ac.jp/cema/>
- **Education Center on Computational Science and Engineering**
<http://www.eccse.kobe-u.ac.jp/>

Institutes

- **Institute for Promoting International Partnerships**
http://www.office.kobe-u.ac.jp/ipiep/index_en.html
- **Institute for Promotion of Higher Education**
<http://www.iphe.kobe-u.ac.jp/>
- **Institute of Promoting Academic Research Programs**
<http://www.kobe-u.ac.jp/en/research/institute.html>

Organization Chart



A Maritime Sciences training boat, the cruiser yacht "Kleiner Berg"