



 **KOBE UNIVERSITY**

1-1, Rokkodai-cho, Nada-ku, Kobe, 657-8501, JAPAN  
<http://www.kobe-u.ac.jp/en>

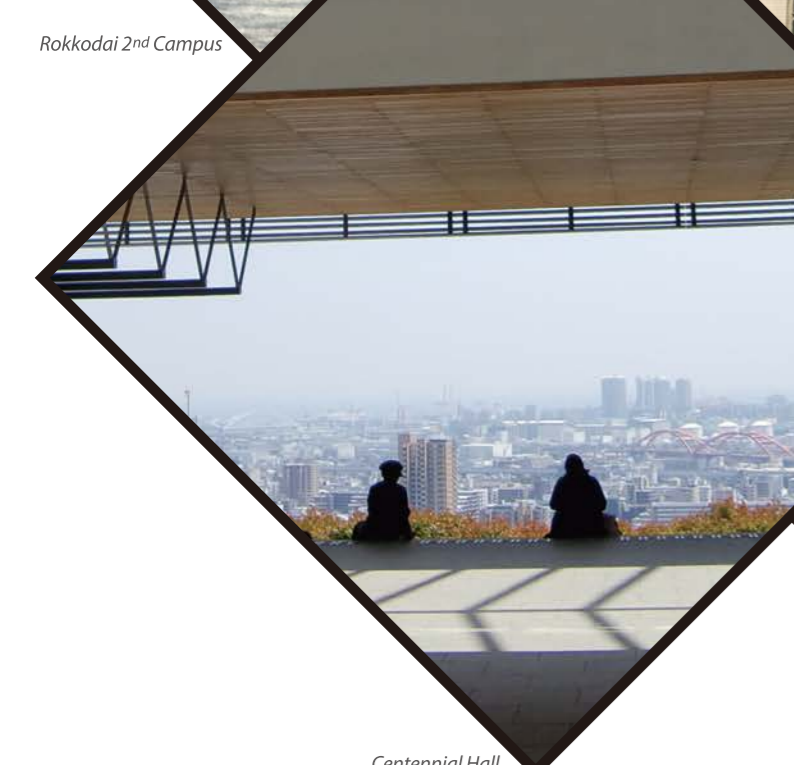
©Kobe University, All Rights Reserved.

**KOBE UNIVERSITY**

神戸大学 2019-2020



Rokkodai 1st Campus Main Building



Rokkodai 2nd Campus



Centennial Hall



Center for Membrane and Film Technology



Graduate School of Intercultural Studies  
Faculty of Global Human Sciences

## Message from the President

As the president of one of the oldest leading universities in Japan, I would like to extend to you a warm welcome. I am honored to have been reappointed for a further two-year term, commencing April 1, 2019, and I will continue to give my utmost to make Kobe University a truly international institution that defies the boundaries of academic fields.

Founded over 110 years ago in a cosmopolitan city, Kobe University encourages an enterprising spirit and independent thinking. While upholding its traditions, the University is committed to the creation of knowledge and new values through interdisciplinary approaches, and to solving the issues facing our society. We are proud that Professor Shinya Yamanaka, a Nobel Laureate in Physiology or Medicine who has made tremendous contributions to the improvement of human life throughout the world, studied here during his undergraduate education.

One of the most comprehensive universities in Japan, with departments covering the humanities, social, natural, and biomedical sciences, Kobe University promotes academic innovation in collaboration with other universities, research institutes, and industry in Japan and abroad. The Organization for Advanced and Integrated Research of Kobe University serves as a core structure for the pursuit of cutting-edge research, encompassing 36 research projects across a wide range of disciplines.

2019 marks the 100th anniversary of our Research Institute for Economics and Business Administration, where researchers now pioneer the digitization of pre-modern manuscripts. This year we have also established three Core Research Centers to enhance multidisciplinary activities for our flagship projects: the Research Center for Membrane and Film Technology (formerly part of the Graduate School of Engineering), the Center for Maritime Education and Research, and the Center for Advanced Medical Engineering Research & Development. With these new organizations and initiatives the University aims to provide solutions to the challenges facing our changing world.

I extend an invitation to students, researchers, individuals and organizations in both public and private sectors interested in studying at or collaborating with Kobe University.

*H. Takeda*  
TAKEDA Hiroshi  
President

## Contents

Message from the President .....	01
At A Glance .....	02-03
Research .....	04-05
Researchers at Kobe .....	06-07
International .....	08-09
Education .....	10
Student Voices .....	11
Support Services .....	12-13
About Kobe .....	14-15
Faculties & Schools .....	16-17
Graduate Schools & Affiliated Centers .....	18-19
Centers, Institutes & Facilities .....	20
Organization Chart .....	21



### Initiative for Excellence

The title of Kobe University's vision expresses our goal to benefit society through outstanding research. The logo represents interdisciplinary collaboration between different academic fields to solve current and future social issues.

# Kobe University At A Glance

All data as of May 1, 2019

**10** Faculties

**15** Graduate Schools

**10** Libraries

**4** Campuses

**25** Core & Affiliated Research Centers

**1** Hospital

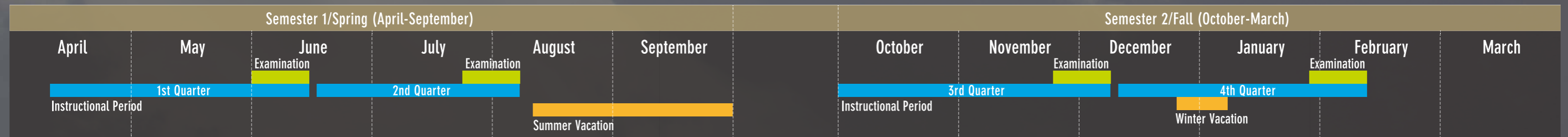
Founded in **1902** (oldest school of commerce in the Kansai area)

Staff **3,702**  
 1,661 Teaching Staff  
 2,041 Administrative Staff (including technical staff and nurses)

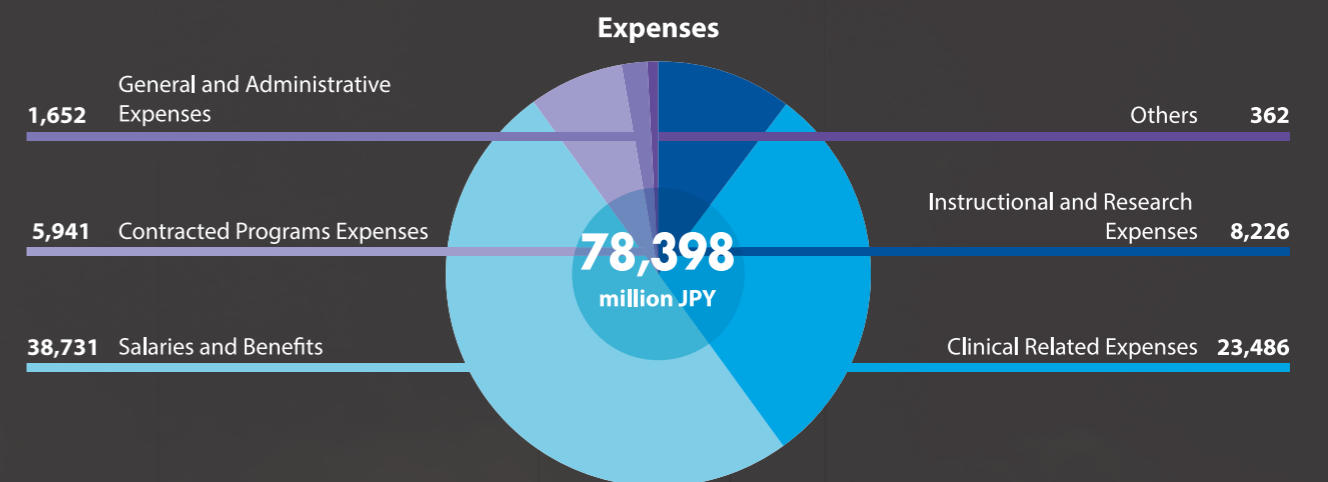
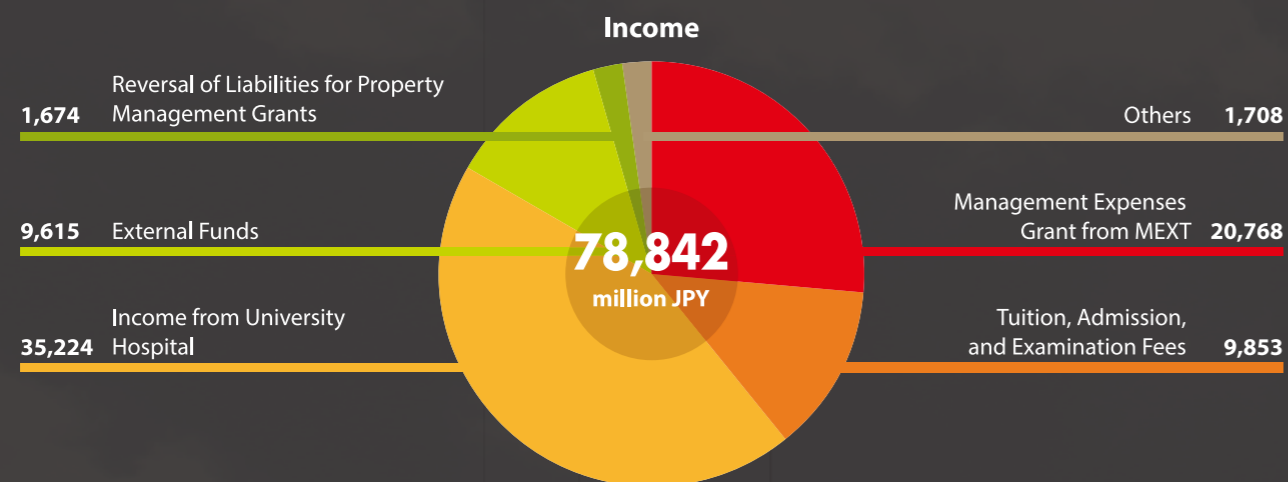
Students **16,226**  
 11,577 Undergraduate Students  
 4,649 Graduate Students

Mobility **1,399** International Students  
 1,154 Outbound Students  
 807 Visiting Researchers/Faculty Members  
 2,509 Outbound Researchers/Faculty Members

## Academic Calendar



## Financial Highlights (fiscal year 2018)



# Research



## Working with society, for society

As stated in President Takeda's April 2015 Vision, Kobe University pledges to become an outstanding research university excelling in advanced and integrated research in the humanities and sciences.

To this end, and to achieve one of our core goals of creating a flagship international base for world-class research, we have newly established the "eXtreme project" within the Organization for Advanced and Integrated Research. In October 2018, as part of this new initiative, we began a multi-disciplinary research project that demands collaboration between the diverse fields of optics, medicine, biology, and information science. The project aims to develop holographic technology that can achieve four-dimensional imaging and stimulation of living cell networks, with wide-ranging applications in life sciences research and clinical settings.

The University is involved in research projects in collaboration with research organizations and private companies, as well as local and national governments. Two leading project groups have recently been promoted to Core Research Centers: the Engineering Biology Research Center in 2018, and the Research Center for Membrane & Film Technology in 2019. In addition, Kobe University has a strong presence on Port Island as part of the Kobe Biomedical Innovation Cluster, facilitating collaboration with national research institutions such as RIKEN as well as organizations within Kobe city. Our joint projects also focus on medical innovation. In 2017 we established the International Clinical Cancer Research Center, and the University is working with Foundation for Kobe International Medical Alliance to establish a "Medical Device Innovation Platform".

### Research at Kobe

**Visit Research at Kobe for more information:**  
[http://www.kobe-u.ac.jp/research\\_at\\_kobe\\_en/index.html](http://www.kobe-u.ac.jp/research_at_kobe_en/index.html)

# Research Spotlight

## Organization for Advanced and Integrated Research

The Kobe University Organization for Advanced and Integrated Research was established to promote cutting-edge, interdisciplinary research that is not limited by the boundaries of humanities or sciences. The Organization is made up of research projects and research units belonging to three divisions: the Division of Life, Medical, Natural Sciences and Technology, the Division of Social Sciences and Humanities, and the Division of Integrated Research. In 2017 we established a new unit on Multidisciplinary Integration for Resilience and Innovation (MIRAI) to promote cross-disciplinary research on disasters. This new unit encompasses the disciplines of humanities, sciences and medicine.

By focusing on these research projects, the Organization for Advanced and Integrated Research pledges to engage in world-class research that contributes to the solution of social problems and the development of science and education in Japan.

<http://www.oair.kobe-u.ac.jp/>



## Research Institute for Economics and Business Administration



Established in 1919 as the Commercial Research Institute of the Kobe Higher Commercial School, the Research Institute for Economics and Business Administration (RIEB) has the longest history of all social science research institutes affiliated to national universities in Japan. In 2019 RIEB celebrates the 100th anniversary of its founding.

Our primary objective is to advance the frontiers of academic research in the fields of economics and business administration, emphasizing publications in international refereed journals. In 2011, RIEB launched The Japanese Accounting Review (TJAR), currently the only international refereed journal in accounting based in Japan.

Another important objective of RIEB is to collect and maintain historically valuable materials. The affiliated Integrated Center for Corporate Archives collects and maintains historical documents pertaining to business administration. Our collections include highly-regarded archives such as the "Kanebo Collection" and the "Kanematsu Collection." In 2014, the RIEB Business Mechanization Exhibition was certified as a 'Satellite Museum of Historical Computers' by the Information Processing Society of Japan.

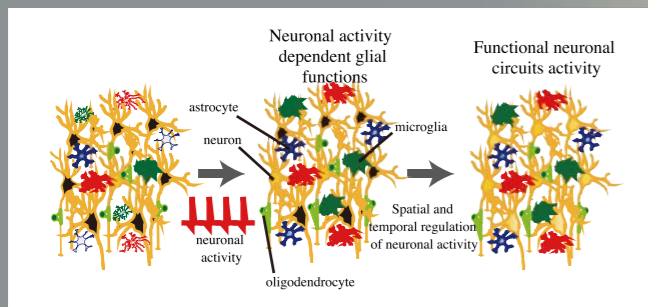
For further details regarding RIEB, please visit our website at:  
<https://www.rieb.kobe-u.ac.jp/en/index.html>



# Researchers at Kobe

## Visualizing nervous systems with optical microscopy

In today's diversifying society, revealing the underlying mechanism of pathologies that damage our higher order of brain functions has become an essential task. The expression of higher brain functions such as learning and memory is carried out by neuronal circuit functions in the central nervous system. Professor Wake's research team is focusing on the glial cells that work to maintain the homeostasis of these neuronal circuits. Using optical measuring technology such as two-photon microscopy, they visualize the structure and functions of the glial cells within living organisms to reveal new physiological functions. Through this process, they are working to uncover the mechanisms that cause disorders in the central nervous system triggered by the failure of these physiological functions.



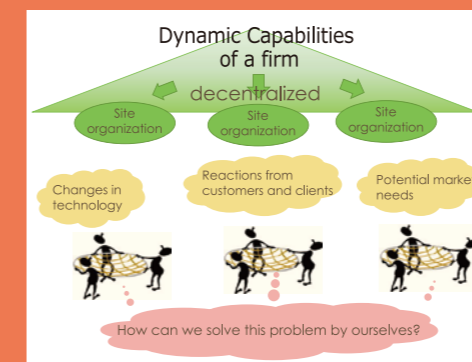
### Hiroaki Wake

Professor, Graduate School of Medicine

[http://www.kobe-u.ac.jp/research\\_at\\_kobe\\_en/NEWS/news/2019\\_01\\_27\\_01.html](http://www.kobe-u.ac.jp/research_at_kobe_en/NEWS/news/2019_01_27_01.html)

## How dynamic firms adapt to change

Dynamic capabilities are a firm's abilities to arrange and rearrange its internal and external resources in order to adapt to environments undergoing rapid change. We are researching dynamic capabilities as organizational capability processes, including the site level. When a firm responds to environmental changes, many adjustments must be made onsite, and those adjustments require multiple decisions and decision makers. An organization's site staff can sense subtle environmental changes and predict other changes that are likely to occur in the near future. They must respond enterprisingly to the state of cooperation in which they have been placed. In organizations with greater onsite autonomy, staff are able to anticipate market trends and technological developments without fail. To examine these processes of decision making, we are conducting a qualitative investigation into some site-level organizations in firms by employing teamwork and shared leadership as conceptual lenses.



### Yoshiko Niwamoto

Associate Professor, Graduate School of Business Administration

<https://www.b.kobe-u.ac.jp/en/faculty/niwamoto/>

## Whose modernism is it?

With the increasing number of art festivals such as biennials and community art projects, the global art scene has become significantly diversified. Meanwhile, it is often pointed out that modern art studies are still West-centric. I myself started as a specialist of postwar American art, but I have been studying it in a way that aims to decenter the canon-based discourse of modernism. In 2015, I joined the curatorial team of "International Pop" exhibition at Walker Art Center in Minneapolis to organize a section of "Tokyo Pop." The exhibition examined the global development of Pop Art in multiple locales—such as Latin America, Eastern Europe, and Japan—to question and revise the hitherto America-centric narrative of Pop Art. This is just one example, though. To further investigate various aspects of global modernisms in the plural form, I am also researching the art of US-occupied Okinawa and Japanese Americans.



"International Pop," Walker Art Center, 2015

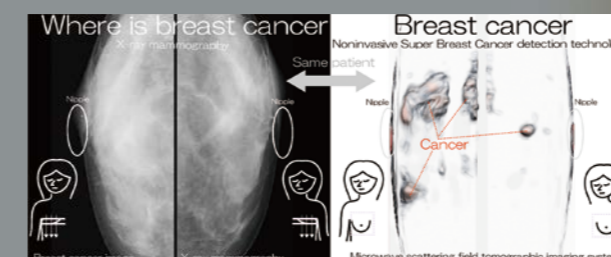
### Hiroko Ikegami

Associate Professor, Graduate School of Intercultural Studies

<http://web.cla.kobe-u.ac.jp/teacher-en2/ikegami-hiroko>

## Breast cancer screening breakthrough using microwave technology

Approximately 80% of Asian women under 50 cannot be tested for breast cancer using the global standard technique of X-ray mammography because of higher breast density. This problem can be solved with a mammography technique that uses microwaves, which have physical properties suited to breast permeation and breast cancer detection. However, an unsolved problem in applied mathematics known as the inverse scattering problem blocked the way to developing this technology. By deriving the basic equation of the scattering field in multi-dimensional space and establishing a multi-static inverse scattering theory that analytically solves this equation, Professor Kimura's team became the first in the world to successfully realize microwave mammography. They believe that in the near future the spread of this technology can prevent all fatalities caused by breast cancer.



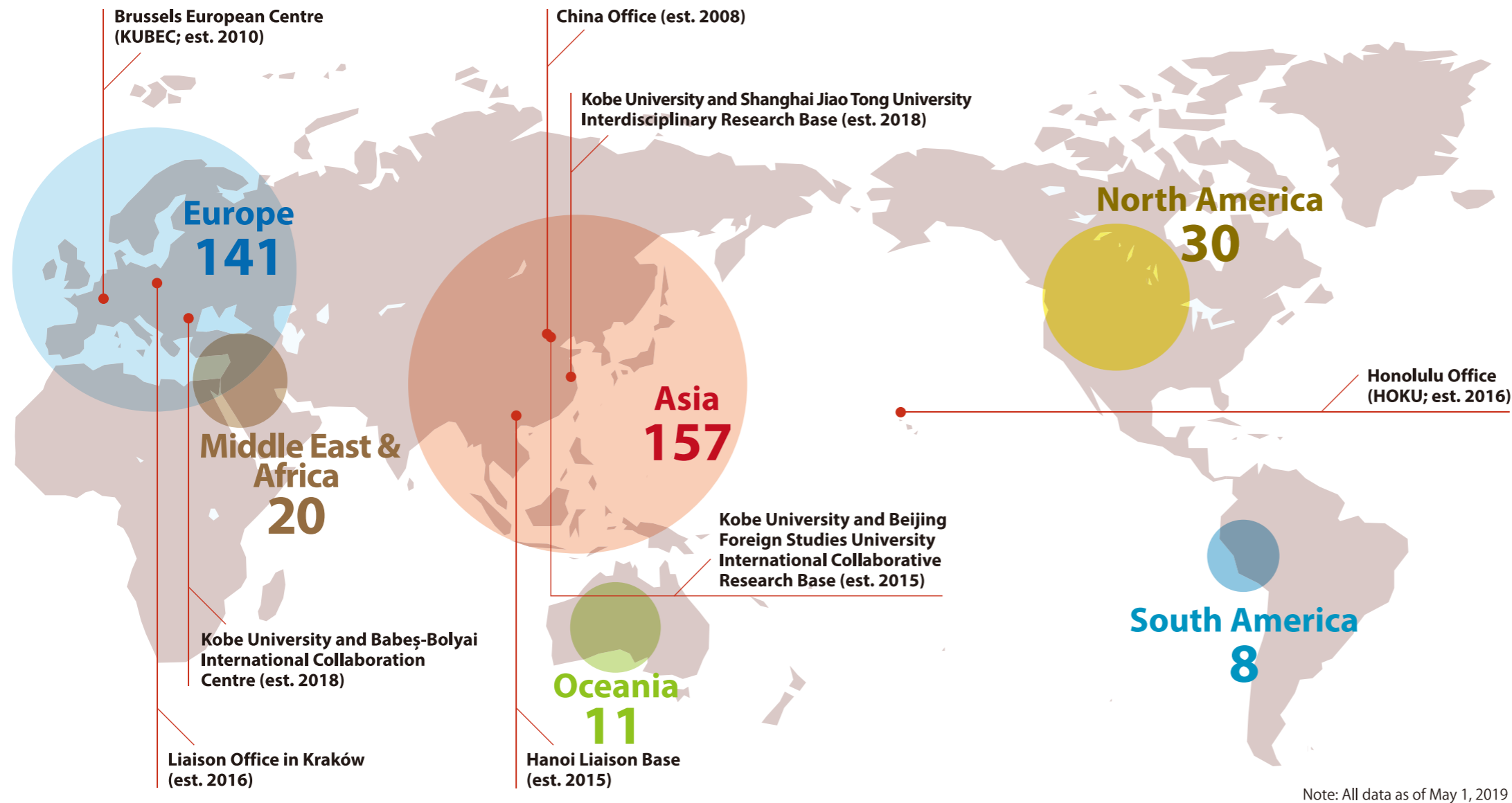
### Kenjiro Kimura

Professor, Center for Mathematical and Data Sciences

[http://www.kobe-u.ac.jp/research\\_at\\_kobe\\_en/NEWS/spotlight/2019\\_06\\_17\\_01.html](http://www.kobe-u.ac.jp/research_at_kobe_en/NEWS/spotlight/2019_06_17_01.html)

# International

## Partner institutions and overseas bases



## Hub Campus

Kobe University is strengthening its global competitiveness through four core bodies established by the Institute for Promoting International Partnerships: the Centre for EU Academic Collaboration, the Center for Asian Academic Collaboration, the Office of the Americas and the Center for International Education. Each Center implements initiatives for interdisciplinary collaboration and international programs.

The University promotes mutual exchange of students and researchers worldwide, and we currently have 367 partner institutions in 64 countries/regions. To enhance our collaboration with higher education institutions, we proactively participate in research and education support schemes by the European Commission such as Horizon 2020 and Erasmus+. Kobe University has developed strong partnerships in Europe by serving as the coordinating university for the EU Institute in Japan, Kansai since 2005, and establishing the Kobe University Brussels European Centre in 2010. Our flagship collaborations in Asia include Indonesia-based joint research on emerging and re-emerging infectious diseases.

In education, the CAMPUS Asia program fosters risk management experts in East Asia, while the KUPES program trains EU specialists. Student mobility is vital for a diverse learning environment, and our goal is an intake of 2000 international students and 1,200 outgoing students every year.

In 2019 we celebrate the tenth anniversary of the Brussels Office. With two new offices opened in 2018, we now have a total of eight overseas offices on three continents. Using these bases alongside other initiatives, we aim to serve as a hub connecting overseas institutions, corporations, and public organizations based in Kobe and abroad.

[http://www.office.kobe-u.ac.jp/ipiep/index\\_en.html](http://www.office.kobe-u.ac.jp/ipiep/index_en.html)

### International Activities

A selection of international activities from the past year (flags indicate the location).



July 7, 2018

The Third Beijing Foreign Studies University – Kobe University Joint Symposium

[http://www.kobe-u.ac.jp/en/NEWS/info/2018\\_07\\_19\\_01.html](http://www.kobe-u.ac.jp/en/NEWS/info/2018_07_19_01.html)



October 24, 2018

The Ninth Kobe University Brussels European Centre Symposium

[http://www.kobe-u.ac.jp/en/NEWS/info/2018\\_11\\_02\\_02.html](http://www.kobe-u.ac.jp/en/NEWS/info/2018_11_02_02.html)



November 15, 2018

Joint seminar on technological change with the European Economic and Social Committee

[http://www.kobe-u.ac.jp/en/NEWS/info/2018\\_11\\_22\\_01.html](http://www.kobe-u.ac.jp/en/NEWS/info/2018_11_22_01.html)



February 2-4, 2019

Academic events with Japan Foundation Budapest

[http://www.kobe-u.ac.jp/en/NEWS/info/2019\\_02\\_22\\_01.html](http://www.kobe-u.ac.jp/en/NEWS/info/2019_02_22_01.html)



November 16, 2018

The Third Honolulu Office of Kobe University Symposium

[http://www.kobe-u.ac.jp/en/NEWS/info/2018\\_11\\_29\\_05.html](http://www.kobe-u.ac.jp/en/NEWS/info/2018_11_29_05.html)



December 7, 2018

The Kobe University – Royal University of Phnom Penh Academic Research and Education Forum

[http://www.kobe-u.ac.jp/en/NEWS/info/2018\\_12\\_19\\_01.html](http://www.kobe-u.ac.jp/en/NEWS/info/2018_12_19_01.html)



March 8, 2019

Joint symposium with University of Southern California and University of California, San Diego

[http://www.kobe-u.ac.jp/en/NEWS/info/2019\\_05\\_10\\_01.html](http://www.kobe-u.ac.jp/en/NEWS/info/2019_05_10_01.html)

# Education



## Thinking globally

*Kobe University aims to educate people who can identify and solve issues on a global scale. The “Kobe Standard” of education is based on the three skills of critical, collaborative and global thinking.*

## Academic calendar

The academic year at Kobe University is divided into 4 terms, known as “quarters”. This gives students more flexibility to participate in overseas exchange programs and internships.

## Kobe University Educational Program on Current Japan (KU-EPOCJ)

The Kobe University Educational Program on Current Japan is an English/English & Japanese-taught course established in April 2016. It is open to exchange students at both undergraduate and graduate levels. The course focuses on current issues in Japan covering a broad range of disciplines, including social sciences, humanities, and natural sciences. Providing opportunities for a deeper understanding of Japan from various perspectives, this program can be combined with students’ specialist fields and Japanese language classes at the Kobe University Center for International Education.

## Programs taught in English

We are increasing the English-taught, globally-oriented programs at Kobe University, with the ultimate goal of 10% English-taught programs. As well as a wide selection of English-taught classes, the University also offers postgraduate programs fully conducted in English. These include programs in Law, Management, Economics, Science, Engineering, Agricultural Science, International Cooperation Studies, Medicine, and Health Sciences. For a full list of English-taught programs, see our International Programs brochure here:

[http://www.office.kobe-u.ac.jp/ipiep/materials/2019\\_International\\_Programs.pdf](http://www.office.kobe-u.ac.jp/ipiep/materials/2019_International_Programs.pdf)

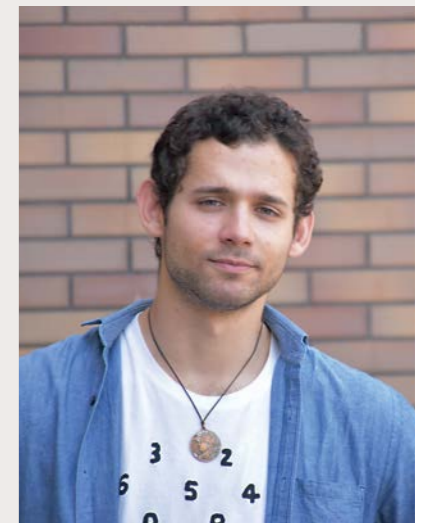
Bachelors programs in Japan are typically four years long, masters are two years, and doctoral courses last for three years. Short-term summer programs are also provided by departments such as Law, Medicine, Health Sciences, Engineering, and cross-department initiatives including a course in advanced science and technology. They last from one to three weeks – see the University website for details.

## Student Voices

### Alejandro Angel Guilarte Gonzalez

*Faculty of Global Human Sciences  
Venezuela*

I’ve just started a four-year undergraduate degree at the Faculty of Global Human Sciences. This Faculty has a heavy emphasis on gaining overseas experience during your studies, and I’m already studying abroad, so in that regard I’m ahead of my peers! I applied to this course largely because of my interest in sociology, particularly immigration. I’ve been an immigrant all my life, I’ve seen the dynamics between immigrants and natives, and it’s an issue I’d like to study more in depth. In Japan immigration is just starting to pick up the pace, so there are lots of things happening here that you can’t observe in other countries. As part of my course I’m also studying French, as well as continuing my Japanese language studies. One of my hobbies is studying Japanese proverbs and four-character idioms, and I’m getting to grips with Japanese onomatopoeia too.



### Jagadeesh Varada

*Graduate School of Science, Technology and Innovation  
India*

This is my first time abroad. I always wanted to come to Japan, and now I’m able to study here. Thanks to the MEXT scholarship. Living in Kobe is very pleasant: it’s not crowded, it has everything you need and is so beautiful. I’m in my second year of the master’s program, and I’d like to continue to the doctoral program. The teachers, staff and students are so encouraging that you would enjoy studying here. Right now, I’m trying to design a biomolecule with a very broad spectrum of antifungal activity which has many applications in agriculture as a cure for plant diseases. I’m impressed with the advanced and the well-equipped laboratories. This program is unique as it also teaches you how to commercialize the research outcome and to make it useful to society. I am so grateful to have this opportunity to learn from the experts.

### Rubby Prasetya

*Graduate School of Maritime Sciences  
Indonesia*

Many people have the impression that Maritime Sciences is all about ships, but our field is very diverse – we also study maritime-related biology, economics, trading routes and so on. I am a third-year doctoral student, and this is my sixth year at Kobe University. My research deals with fuel injectors in diesel engines. To put it simply, I’m studying how to make the fuel injection process more efficient. Japan came highly recommended to me for the research environment, and Kobe University’s research network is impressive - I have had the chance to collaborate with various universities, research institutes and industries both in and outside Japan. I graduate this year, and I’ve been offered a position in the R&D division of a major Japanese company. Before coming to Japan I didn’t speak any Japanese, but I recommend that you study the language before you get here - research is collaborative.



# Support Services



Library for Social Sciences



Centennial Hall

## University Libraries

Kobe University Library has a collection of about 3,770,000 bibliographical materials. The Library is comprised of the General Library and 9 branches divided by subject. They are located in the Rokkodai, Kusunoki, Myodani, and Fukae campuses. Each library provides a wide range of books and journals for students and faculty to advance their education and assist their research. They can also use the online delivery service to order books from other campus libraries. Moreover, convenience is improving for students, such as discussion-based learning at the Learning Commons. In 1999, "Digital Library System" was launched. It provides digitized collections for users inside and outside the campus via the internet (<http://www.lib.kobe-u.ac.jp/da/e-index.html>). "The Earthquake Disaster Materials Collection (EDMC)" holds over 50,000 materials related to the Great Hanshin-Awaji Earthquake. The EDMC is open to the public, with the aim of contributing to the development of earthquake-related research such as emergency restoration and disaster prevention measures.

<https://lib.kobe-u.ac.jp/en/>



Library for Science and Technology

## For International Students and Researchers

### International Student Section in the Center for International Education (CIE)

The International Student Section in the CIE (formerly the International Student Center) was established as a university-wide research and teaching facility in April 1993. The Section assumes overall responsibility for international students, including the provision of Japanese language instruction, Japanese studies courses, advice on studying and living in Japan, career advice, and alumni networking. The Section also undertakes research and development to promote international study exchange programs, such as supporting Japanese students at Kobe University wishing to study overseas. In addition, the Section actively promotes international exchange programs in the local community, working with regional government agencies, local volunteer organizations, schools and companies.

<http://www.kisc.kobe-u.ac.jp/english/>

### Accommodation

Kobe University has several dormitories for international students and researchers located within commuting distance. Kobe University International Residence and International House are exclusively for international students and researchers, however, other dormitories are for both international and Japanese students at Kobe University. The resident fees vary by room type. There are also boarding houses run by public and private organizations available for international students and researchers.

### Rent Subsidy System

Kobe University has a rent subsidy system for eligible international researchers who agree to live in one of the public-run apartments designated by the University in the event there is no room available in either the International Residence or International House. Under this system, the University will pay a certain amount of the monthly rent. Residents themselves must pay utilities and other fees.

## Welfare

### Medical Center for Student Health

The Medical Center for Student Health was established in April 1970. Services provided by the Center include an annual medical checkup for all students and staff, special checkups for people working with X-ray, radioisotope and other harmful substances, as well as a medical checkup for new international students. Emergency medical treatment is also available. There are doctors and nurses as well as counsellors to provide consultation and advisory services on physical and mental well-being. The Medical Center for Student Health also plays an important part in creating a safe and hygienic educational environment, through Health and Safety activities administered by qualified doctors.

<http://www.health.kobe-u.ac.jp/>

### Support Center for Campus Life

This Center provides consultations and assistance in cases when a member of the University is experiencing disability-related difficulties or worries regarding their studies or university life. We will work with your department to meet your needs, including support for lectures, course registration, and examinations.

<http://www.kobe-u.ac.jp/SCCL/>

Residence	Commute	Map
1 International Residence	To Rokkodai Campus, 30-40 min. by Port-liner and Hankyu train	
2 International House (Fukae area)	To Rokkodai Campus, about 50 min. by train and bus To Fukae Campus, about 8 min. on foot	
Sumiyoshi		
3 International Student House (students only)	To Rokkodai Campus, 40-50 min. either on foot or by bus and train	
4 Sumiyoshi Residence (male students only)	To Rokkodai Campus, 40-50 min. either on foot or by bus and train	
5 Joshi-Ryo (female students only)	To Rokkodai Campus, 40-50 min. either on foot or by bus and train	
6 HAKUO Dormitory (Fukae area) (students only)	To Rokkodai Campus, about 50 min. by train and bus To Fukae Campus, about 10 min. on foot	
7 KOKUI Residence (students only)	To Rokkodai Campus, 30 min. by bus and on foot	



# About Kobe

*“Perched on a hillside sloping down to the sea, Kobe is one of Japan’s most attractive and cosmopolitan cities.” – Lonely Planet*

Kobe is the capital of Hyogo Prefecture, located in the western part of Japan’s main island of Honshu. Sandwiched between the Rokko mountain range to the north and the Inland Sea to the south, the city is blessed with a mild climate averaging 17.1°C (62.8F) with four seasonal changes. It has a population of over 1.5 million including 43,000 foreign residents from as many as 132 different countries.

Accessible by land, air and sea, Kobe is a hub for other domestic and international destinations: Kyoto, Himeji, Osaka and Nara are all within easy reach, and Tokyo is a short bullet train or plane ride away.

Kobe University’s four campuses and accommodation are all easily accessed from the city center of Sannomiya by bus and train.

## A multicultural port city

Ever since Japan was opened to the world, Kobe has been a cosmopolitan port city where people, goods, and information from around the globe are in constant motion. The area is now home to a rich blend of Japanese

tradition and international influences. In the city center you can find Ikuta Shrine, founded in the third century AD, with historical foreign residences and Japan’s oldest mosque just a short walk away. On the other side of the mountain range lies Arima Onsen, one of Japan’s oldest hot spring resorts.

Kobe’s history of cultural exchange has contributed to its diverse arts scene: it is the birthplace of Japanese jazz, and in 2008 Kobe joined UNESCO’s Creative Cities Network as a City of Design. The city’s cuisine also shows culinary influence from around the world. As well as the renowned Kobe beef and traditional Japanese sake breweries, Kobe is also well-known for its bustling Chinatown near the Port of Kobe, numerous bakeries and European-inspired sweets.

Located between the mountains and the sea, Kobe is an ideal location to explore Japan’s natural surroundings. Hiking trails and cable cars from the city provide transport to the peaks of the Rokko Mountains, the best place to experience Kobe’s famous night views. A few kilometers west from the Port of Kobe the beaches of Suma and Maiko are popular for watersports.

## Industry and innovation

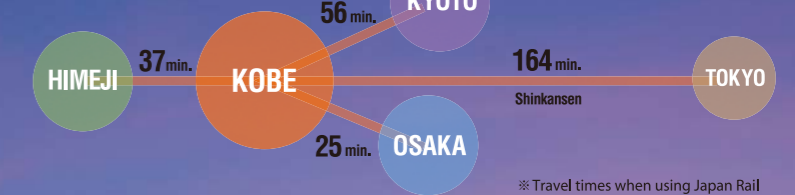
Kobe and the surrounding area suffered heavy damage from the 1995 Great Hanshin-Awaji Earthquake. In the following years, with support from people throughout Japan and the world, Kobe’s citizens have rebuilt the city into a hub for business and industry.

Traditionally home to heavy industries such as shipbuilding, iron and steel, the city is now a hub for IT, science and technology. At the center of this is the Kobe Biomedical Innovation Cluster on Port Island where nearly 350 research institutes, corporations and universities are working together to develop state-of-the-art medical

technology and research into integrated medical-related industries. The Cluster houses the K computer, one of the fastest supercomputers in the world. A few kilometers west lies SPring-8, the world’s largest third-generation synchrotron radiation facility.

Kobe has a high concentration of foreign-affiliated companies and international organizations: branches of the World Health Organization and the Japan International Cooperation Agency are both based in the center. The city will also be a host for the Rugby World Cup 2019.

## Location



# Faculties & Schools



## Courses

### Letters

<http://www.lit.kobe-u.ac.jp/english/index.html>

Humanities

### Global Human Sciences

<http://www.fgh.kobe-u.ac.jp/en>

Global Cultures  
Human Development and Community  
Environment and Sustainability  
Child Education

### Law

<http://www.law.kobe-u.ac.jp/english.html>

Law (includes Politics)

### Economics

<http://www.econ.kobe-u.ac.jp/en/>

Economics

### Business Administration

<https://www.b.kobe-u.ac.jp/en/>

Business Administration

### Science

<http://www.sci.kobe-u.ac.jp/english/index.htm>

Mathematics  
Physics  
Chemistry  
Biology  
Planetology

### Medicine

<http://www.med.kobe-u.ac.jp/en/index.html>

<http://www.ams.kobe-u.ac.jp/en>

Medicine  
Health Sciences

### Engineering

<http://www.eng.kobe-u.ac.jp/en/>

Architecture  
Civil Engineering  
Electrical and Electronic Engineering  
Mechanical Engineering  
Chemical Science and Engineering  
Computer Science and Systems Engineering

### Agriculture

<http://www.ans.kobe-u.ac.jp/english/index.html>

Agricultural Engineering and Socio-Economics  
Bioresource Science  
Agrobioscience

### Maritime Sciences

<http://www.maritime.kobe-u.ac.jp/en/index.html>

Global Transportation Sciences  
Ocean Safety Systems Science  
Marine Engineering

# Graduate Schools



Kobe University has 15 graduate schools covering a wide range of disciplines.  
All courses are offered at both masters and doctoral levels unless otherwise specified.

## Courses

<b>Humanities</b> <a href="http://www.lit.kobe-u.ac.jp/english/index.html">http://www.lit.kobe-u.ac.jp/english/index.html</a>	Human Cultural Studies Human Social Dynamics
<b>Intercultural Studies</b> <a href="http://web.cla.kobe-u.ac.jp/graduate-en/">http://web.cla.kobe-u.ac.jp/graduate-en/</a>	Cultural Interaction Culture and Globalization
<b>Human Development and Environment</b> <a href="http://www.h.kobe-u.ac.jp/en/">http://www.h.kobe-u.ac.jp/en/</a>	Human Development Human Environmental Science
<b>Law</b> <a href="http://www.law.kobe-u.ac.jp/english.html">http://www.law.kobe-u.ac.jp/english.html</a>	Professional Degree Program: Professional Legal Studies Law and Politics
<b>Economics</b> <a href="http://www.econ.kobe-u.ac.jp/en/">http://www.econ.kobe-u.ac.jp/en/</a>	Economics
<b>Business Administration</b> <a href="https://www.b.kobe-u.ac.jp/en/">https://www.b.kobe-u.ac.jp/en/</a>	Business Administration Advanced Management
<b>Science</b> <a href="http://www.sci.kobe-u.ac.jp/english/index.htm">http://www.sci.kobe-u.ac.jp/english/index.htm</a>	Mathematics Physics Chemistry Biology Planetology
<b>Medicine</b> <a href="http://www.med.kobe-u.ac.jp/en/index.html">http://www.med.kobe-u.ac.jp/en/index.html</a>	Biomedical Sciences (Masters course only) Medical Sciences (Doctoral course only)
<b>Health Sciences</b> <a href="http://www.ams.kobe-u.ac.jp/en/">http://www.ams.kobe-u.ac.jp/en/</a>	Nursing Biophysics Rehabilitation Science Public Health
<b>Engineering</b> <a href="http://www.eng.kobe-u.ac.jp/en/">http://www.eng.kobe-u.ac.jp/en/</a>	Architecture Civil Engineering Electrical and Electronic Engineering Mechanical Engineering Chemical Science and Engineering
<b>System Informatics</b> <a href="http://www.csi.kobe-u.ac.jp/english/index.html">http://www.csi.kobe-u.ac.jp/english/index.html</a>	Systems Science Information Science Computational Science

## Courses

<b>Agricultural Science</b> <a href="http://www.ans.kobe-u.ac.jp/english/index.html">http://www.ans.kobe-u.ac.jp/english/index.html</a>	Agricultural Engineering and Socio-Economics Bioresource Science Agrobioscience
<b>Maritime Sciences*</b> <a href="http://www.maritime.kobe-u.ac.jp/en/index.html">http://www.maritime.kobe-u.ac.jp/en/index.html</a>	Maritime Sciences
<b>International Cooperation Studies</b> <a href="http://www.gsics.kobe-u.ac.jp/">http://www.gsics.kobe-u.ac.jp/</a>	Economic Development and Policies International Cooperation Policy Studies Regional Cooperation Policy Studies
<b>Science, Technology and Innovation</b> <a href="http://www.stin.kobe-u.ac.jp/en/index.html">http://www.stin.kobe-u.ac.jp/en/index.html</a>	Science, Technology and Innovation

\*Note: The Graduate School of Maritime Sciences also offers a Sea Training Course, with two departments of Nautical Science and Marine Engineering.

## Affiliated Research Centers

<b>Intercultural Studies</b>	Research Center for Promoting Intercultural Studies (Promis)
<b>Science</b>	Center for Planetary Science
<b>Medicine</b>	Institute for Experimental Animals Center for Infectious Diseases
<b>Engineering</b>	Research Center for Interfacial Science (RCIS) Complex Fluid and Thermal Engineering Research Center (COFTEC) Research Center for Advanced Smart Materials (RCASM) Resilient Structure Research Center (ReSRC) Medical Device Fabrication Engineering Center (MeDFEC) Center for Resilient Design (CResD)
<b>Agricultural Science</b>	Food Resources Education and Research Center Center for Regional Partnership Research Center for Food Safety and Security (RCFSS)
<b>Maritime Sciences</b>	International Maritime Research Center (IMaRC)

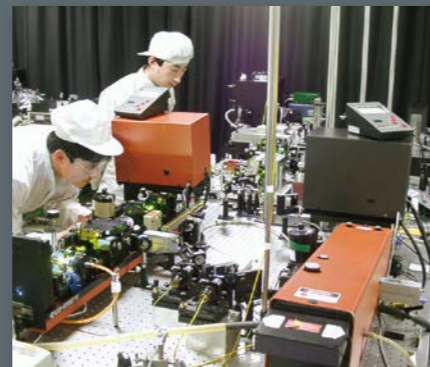
# Centers, Institutes & Facilities

## Core Research Centers

- **Biosignal Research Center**  
<http://www.biosig.kobe-u.ac.jp/index.html>
- **Research Center for Inland Seas**  
<http://www.research.kobe-u.ac.jp/rcis-kurcis/e.html>
- **Research Center for Urban Safety and Security**  
<http://www.rcuss.kobe-u.ac.jp/English/index-e.html>
- **Molecular Photoscience Research Center**  
<http://www.research.kobe-u.ac.jp/mprc/>
- **Kobe Ocean-Bottom Exploration Center**  
<http://www.k-obec.kobe-u.ac.jp/>
- **Kobe University Center for Social Systems Innovation**  
<http://cfssi.kobe-u.ac.jp/index-e.html>
- **Center for Mathematical and Data Sciences**  
<http://www.cmds.kobe-u.ac.jp/en/>
- **Center for Computational Social Science**  
<http://ccss.kobe-u.ac.jp/en/index.html>
- **Engineering Biology Research Center**
- **Research Center for Membrane and Film Technology**  
<http://www.research.kobe-u.ac.jp/eng-membrane/center/index-eng.html>
- **Center for Advanced Medical Engineering Research & Development**



Biosignal Research Center



Molecular Photoscience Research Center



Information Science and Technology Center (ISTC)



Institute for Promotion of Higher Education

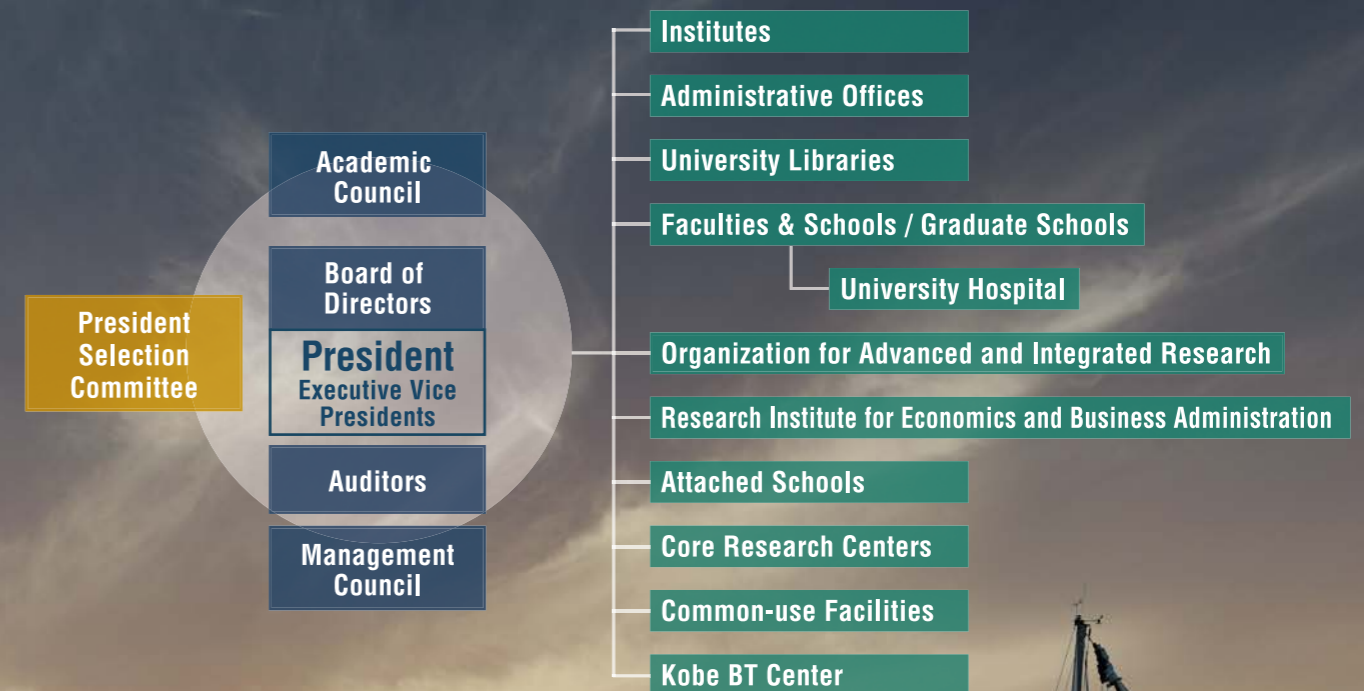
## Common-use Facilities

- **Information Science and Technology Center**  
<http://www.istc.kobe-u.ac.jp/>
- **Research Facility Center for Science and Technology**  
<http://www.csrea.kobe-u.ac.jp/>
- **Center for Environmental Management**  
<http://www.research.kobe-u.ac.jp/cema/>
- **Education Center on Computational Science and Engineering**  
<http://www.eccse.kobe-u.ac.jp/>
- **Medical Center for Student Health**  
<http://www.health.kobe-u.ac.jp/>
- **Career Center**  
<http://www.career.kobe-u.ac.jp/>
- **Support Center for Campus Life**  
<http://www.kobe-u.ac.jp/SCCL/index.html>
- **Kobe University Admission Center**  
<http://www.edu.kobe-u.ac.jp/admc-info/index.html>
- **Center for Maritime Education and Research**

## Institutes

- **Institute of Promoting Academic Research Programs**  
<http://www.kobe-u.ac.jp/en/research/institute.html>
- **Institute for Promotion of Higher Education**  
<http://www.iphe.kobe-u.ac.jp/>
- **Institute for Promoting International Partnerships**  
[http://www.office.kobe-u.ac.jp/ipiep/partners\\_en.html](http://www.office.kobe-u.ac.jp/ipiep/partners_en.html)

## Organization Chart



A Maritime Sciences training boat, the cruiser yacht "Kleiner Berg"