

神戸大学

 **KOBE UNIVERSITY**

1-1, Rokkodai-cho, Nada-ku, Kobe, 657-8501, JAPAN
<http://www.kobe-u.ac.jp/en>

KOBE UNIVERSITY

神戸大学 2021-2022

Our Vision

Towards a global hub for the multidisciplinary co-creation of research and education that cultivates profound knowledge and outstanding innovators.

Kobe University is an academic institution that has continued to encourage forward-looking and independent thinking in working towards our ideal of creating 'harmony between theory and reality'. Based on our spirit of 'integrity, freedom and cooperation', we seek to build upon our rich academic traditions of pursuing the truth, social implementation, and bolstering people's knowledge and merits. In this way, Kobe University has shored up the foundations of society and revitalized industry and the economy, while contributing towards the resolution of various issues facing the world.

In continuing these traditions, we propose our long-term vision of further advancing and developing as a 'global hub for the multidisciplinary co-creation of research and education that cultivates profound knowledge and outstanding innovators', employing our strengths in literature, humanities and social sciences combined with the natural and biomedical sciences to invigorate society. In other words, we aim to become a world-class center for the multidisciplinary co-creation of education and research in order to meet the needs of a post-pandemic, knowledge-based digital society with a rapidly aging population. This will involve putting all our strengths into enhancing and promoting varied collaborations and joint efforts, cultivating invaluable human resources who can resolve current and future societal issues; bringing about innovation through the creation of new knowledge and values.

To read more about Our Vision, please see the following link:
https://www.kobe-u.ac.jp/en/about_us/vision/index.html



Fukae Campus

Rokkodai 1st Campus Main Building

Library for Social Sciences

Message from the President

As the recently appointed 15th President, I would like to warmly welcome you to Kobe University. Located in an international port city, our university constantly strives to pursue knowledge and expand international connections with renowned institutions worldwide. Over the years, the university has continued to welcome researchers and students from around the globe, producing many graduates who are active in diverse industries and areas of society.

As one of Japan's oldest leading universities, Kobe University is also highly comprehensive, offering an outstanding research and education environment based on interdisciplinary cooperation between the natural sciences, life sciences, humanities and social sciences. In April 2021, Kobe University established the Faculty of Oceanology to further our long tradition of seamanship education.

Over the past year, we have been collaborating closely with industry, government and other academic institutions to tackle the novel coronavirus pandemic. Kobe University and its hospital worked with 6 other organizations on Japan's first mass coronavirus vaccination model, resulting in the establishment of a large-scale vaccination center at a soccer stadium in Kobe.

2022 marks the 120th anniversary of Kobe University's establishment. I extend a cordial invitation to students, researchers, individuals and organizations that are interested in studying at or collaborating with Kobe University.

Masato Fujisawa

FUJISAWA Masato
 Kobe University President



Contents

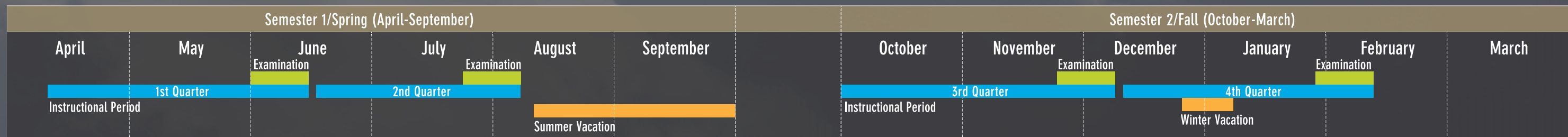
Our Vision and Message from the President	00-01
Kobe University At a Glance	02-03
Research & Research Spotlight	04-05
Researchers at Kobe	06-07
International	08-09
Education	10-11
Support Services	12-13
About Kobe	14-15
Faculties & Schools	16-19
Centers, Institutes & Facilities	20
Organization Chart	21

Kobe University At a Glance

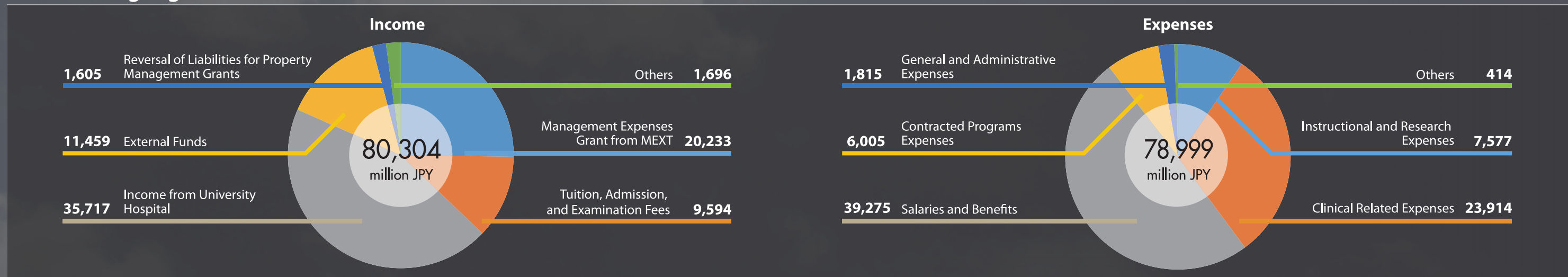
All data as of May 1, 2021

10 <u>Faculties</u>	15 <u>Graduate Schools</u>	Staff 4,063 1,668 Teaching Staff 2,395 Administrative Staff (including technical staff and nurses) 100 Visiting Researchers/Faculty Members
10 <u>Libraries</u>	4 <u>Campuses</u>	
27 <u>Core & Affiliated Research Centers</u>	1 <u>Hospital</u>	
Founded in 1902 (oldest school of commerce in the Kansai area)		Students 15,986 11,493 Undergraduate Students 4,493 Graduate Students Including 1,184 International Students

Academic Calendar



Financial Highlights (fiscal year 2020)



Research



Working with Society, for Society

Kobe University aims to establish itself as a hub for the accumulation of world-class knowledge. We continue to strive towards this aim with our mission to create new values from the results of our fundamental research, and implement these values in society.

As part of these efforts, we have established the Entrepreneurship Center in the Enterprise Partnerships Division (the industry-academia-government collaboration office for innovation), where we focus on supporting entrepreneurs and producing start-up companies. The Graduate School of Science Technology and Innovation also places emphasis on fostering entrepreneurs who specialize in bioscience. In addition, we are contributing towards the development of society through the activities of our medical-related international exchange centers: the Medical Device Innovation Platform (MeDIP) and the Center for Advanced Medical Engineering Research & Development (CAMED). Furthermore, the Office for Promoting SDGs has been established to contribute our expertise towards the attainment of the UN's 17 goals.

Kobe University will dramatically enhance its role as a 'hub campus' that attracts talented personnel from around the world and equips students with an international perspective, through multi-faceted academic exchanges with major overseas universities in joint research and collaborative education. Through these global collaborations, Kobe University will endeavor to produce novel academic values and strive for the inclusive, flexible and sustainable development of our society in the COVID-19 era and beyond.

Research at Kobe

For the latest research news, visit:

http://www.kobe-u.ac.jp/research_at_kobe_en/index.html

Research Spotlight

Engineering Biology Research Center (EGBRC)

<http://www.egbrc.kobe-u.ac.jp/en/index.html>

Established on July 1, 2018, the Engineering Biology Research Center (EGBRC) at Kobe University is charged with the mission of exploring the frontiers of engineering biology by leveraging Kobe University's unique features and strengths. The EGBRC is also the sole research center in Japan that aims to create innovation in this emerging interdisciplinary field.

Our goal is to make the EGBRC a hub for innovation that combines "hardware," or tangibles such as research space and equipment, and "software," or intangibles such as researchers and intellectual properties. We will achieve this by building and

expanding a research and development platform while simultaneously promoting advanced research and development through industry-university-government collaboration.

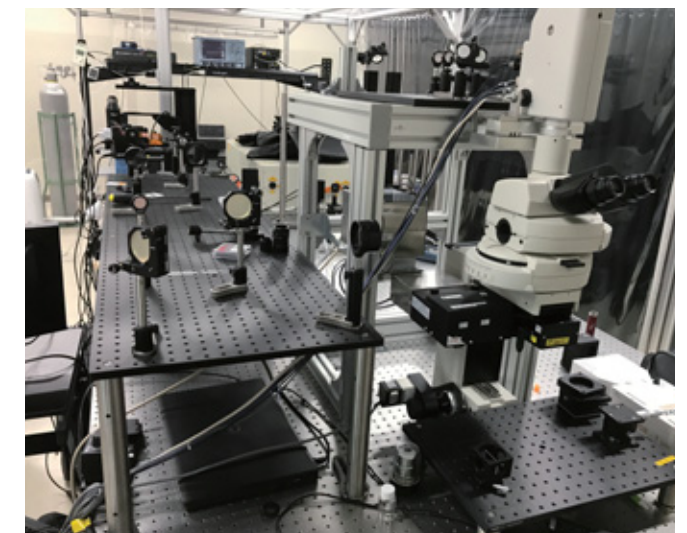
Building on our extensive track records of teaching/researching biology engineering and partnerships with outside institutions, we intend to shape the bioeconomy by creating the kind of innovation that meets demand from the government and society at large, including the bioproduction of a variety of useful substances.



HoLM: Holographic Live Imaging and Manipulation

<http://www.oair.kobe-u.ac.jp/kiwami/en/index.html>

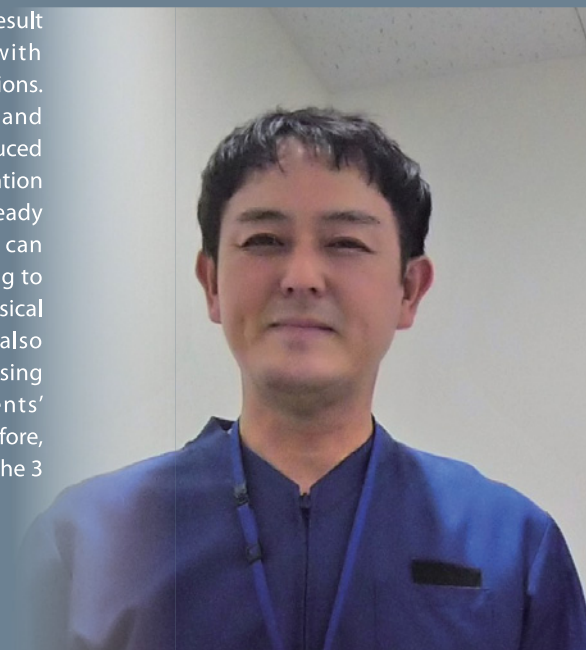
Originally launched as the 'eXtreme Project' in 2018, Kobe University's cutting-edge holographic technology project was rebranded as HoLM in April 2021, with the aim of increasing international recognition of its research successes in Life Science and Biology. HoLM's interdisciplinary team consists of experts in optics, medicine, biology, information science, and engineering. These diverse researchers have been developing a novel integrated holographic microscope for the optical manipulation of cell activities and high-speed ultra-deep observation of cells, which has a wide range of possible applications across different fields. The microscope uses optogenetics to manipulate a large number of cells to be simultaneously optically stimulated and enables researchers to understand biological functions through observing living cell networks in four dimensions (three dimensions in space and one dimension in time). HoLM is aiming to revolutionize Life Science by applying this innovative technology to the elucidation and manipulation of brain functions and plant stem cell processes.



Researchers at Kobe

The importance of cardiac rehabilitation for patients with cardiovascular disease

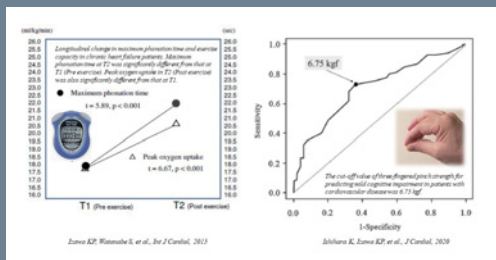
Cardiovascular diseases are rapidly becoming more prevalent worldwide as a result of the increase in lifestyle diseases. The number of elderly patients with cardiovascular diseases is also rising, especially in countries with aging populations. These patients in particular may be forced to restrict their daily activities and consequently experience a lower quality of life due to sedentary behaviour, reduced physical function, and potential cognitive impairment. Although early intervention during childhood may prevent lifestyle-related diseases, for patients who already have cardiovascular disease and physical disabilities, cardiac rehabilitation can improve exercise capacity and prognosis in addition to quality of life, helping to reduce subsequent cardiac events, mortality, and medical costs. Improved physical function and activity can not only prevent cognitive dysfunction but can also reduce mild cognitive impairment and may actively prevent the need for nursing care in the future. These factors are all important for managing patients' re-hospitalisation rates and reducing medical expense increases in Japan. Therefore, my colleagues and I are constantly striving to resolve these problems through the 3 pillars of clinical practice, education, and research.



Kazuhiro P. Izawa
Associate Professor, Graduate School of Health Sciences



<https://kuid-rm-web.ofc.kobe-u.ac.jp/profile/en.3330637c7f4d6307520e17560c007669.html>



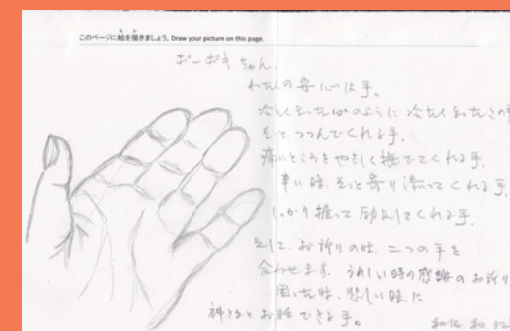
Use of art-stories to promote disaster awareness, connection and peace

I love stories because they help us to share our worlds, and to change them. Stories told by nuclear survivors from Hiroshima and the Marshall Islands inspired me to become a peace scholar, educator and activist. Today, I use stories in seeking alternatives to military security through study of intersections of gender, militarization and colonization in Pacific Islands, and to express the feeling safe. Stories of living under conditions of inequality, militarization, colonization, disaster or fear help us to identify, understand and transform violence that is often difficult to see. After the March 2011 disaster, I began a drawing project in the disaster area and have been collecting and sharing art-stories of feeling safe, linking communities around the world. This on-going project has led to research on methodologies for analysis and use of art stories in disaster awareness and peace-making, as well as a new intervention in the face of COVID-19, Popoki's Mask Gallery.



Ronni Alexander
Professor, Graduate School of International Cooperation Studies (GSICS)

<http://www.gsics.kobe-u.ac.jp/en/programs/tstaff/alexanderEN.html>



Investigating the wider impact of music on US-Japan relations

How can we bring together different views on the same material in a variety of ways, and describe the new perspectives that emerge when viewed in their own cultural contexts? I believe that this is a challenge for the study of "cross-border" and "dialogical" music cultural history. "Marian Anderson's 1953 Concert Tour of Japan: A Transnational History," co-authored with Katie Callam, Makiko Kimoto and Carol J. Oja examines the impact of African-American contralto singer Marian Anderson on US cultural policy towards Japan during the occupation and post-occupation periods, considering aspects such as race, politics, gender bias, music criticism, and cross-cultural exchange. It is a multifaceted investigation into the background and repercussions of her visit to Japan and its legacy. The most recent publication co-authored with Professor Oja in such a manner, is entitled: "US Concert Music and Cultural Reorientation during the Occupation of Japan".



photo by Akinori Gomi

Misako Ohta
Associate Professor, Graduate School of Human Development and Environment

<https://www.h.kobe-u.ac.jp/en/staffs-en/OHTA%20Misako>



The concert venue: Hibiya Public Hall

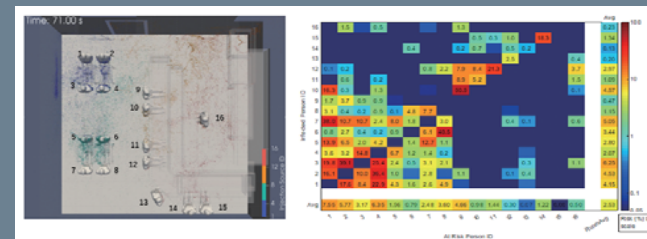
Aerosol simulation and infection risk evaluation using the world's fastest super computer

Spreading rapidly around the globe in 2020, the novel coronavirus (COVID-19) has completely altered our lives. How is this unknown virus transmitted between people? Previously, we have been researching and developing technology to predict the movement of air and water using supercomputers. By utilizing these technology with FUGAKU, the world's most advanced supercomputer, we can predict droplet dispersion in public places and on public transport in a rapid and timely manner according to the current infection situation, enabling us to produce infection risk evaluations and proposals for risk reduction measures. Mainstream media coverage of these simulation results has led to greater public awareness and understanding of droplet infection and the importance of infection prevention measures. The results have also contributed towards the formulation of guidelines for the recommencement of activities as they have informed the decisions of government bodies, such as the Cabinet Office.



Makoto Tsubokura
Professor, Graduate School of System Informatics

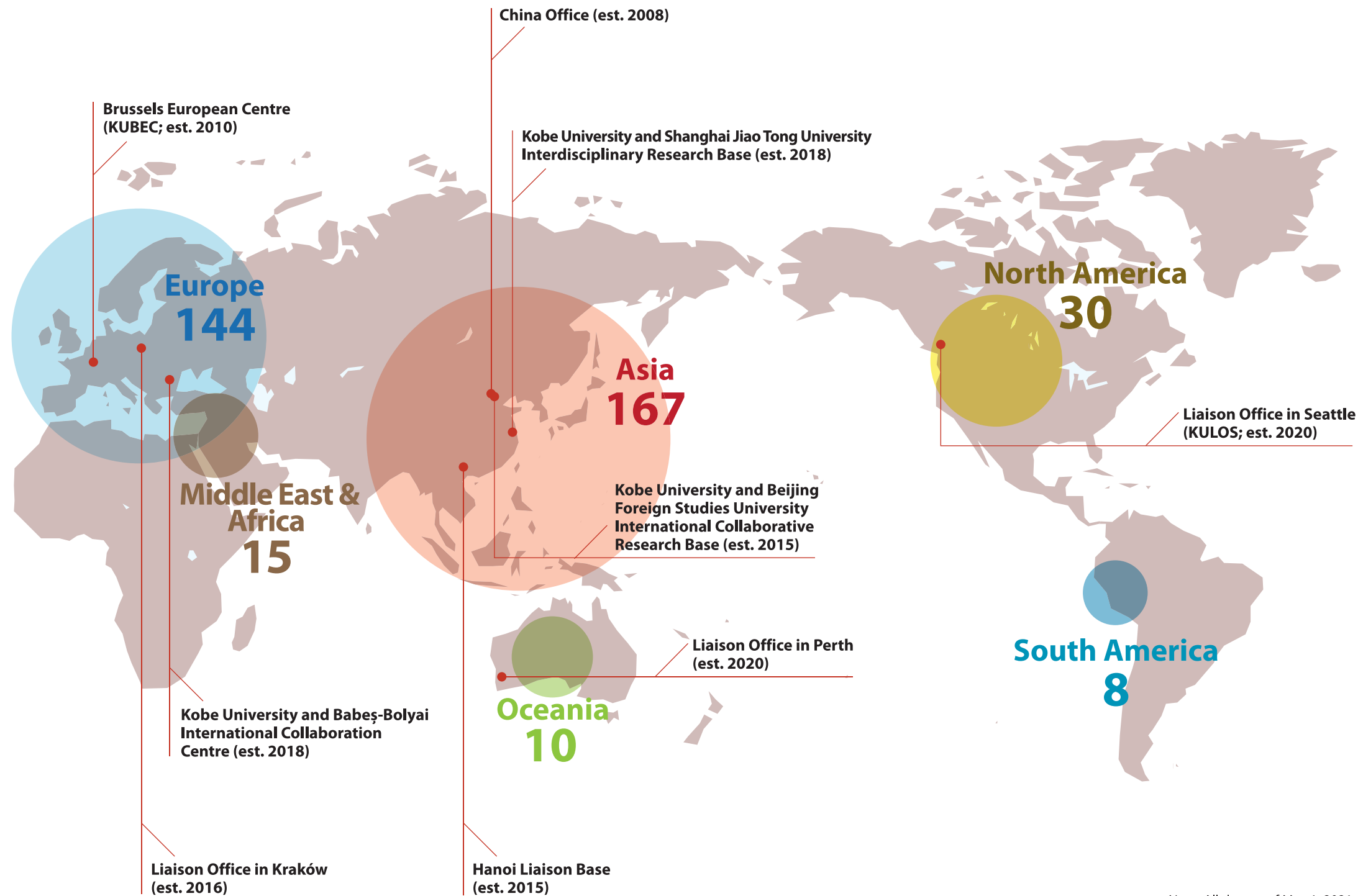
<https://kuid-rm-web.ofc.kobe-u.ac.jp/profile/en.0eb599be2df55cbd520e17560c007669.html>



Left: Droplet dispersion inside a restaurant.
Right: Infection risk map for the room.

International

Number of partner institutions and overseas bases



Note: All data as of May 1, 2021

International: Hub Campus

Kobe University is strengthening its global competitiveness through five core bodies established by the Institute for Promoting International Partnerships: the Centre for EU Academic Collaboration, the Center for Asian Academic Collaboration, the Office of the Americas, the Center for International Education and the Center for Interdisciplinary Programs. Each Center implements initiatives for interdisciplinary collaboration and international programs.

The University promotes mutual exchange of students and researchers worldwide, and we currently have 374 partner institutions in 64 countries/regions. To enhance our collaboration with higher education institutions, we proactively participate in research and education support schemes by the European Commission such as Horizon 2020 and Erasmus+. Kobe University has developed strong partnerships in Europe by serving as the coordinating university for the EU Institute in Japan, Kansai since 2005, and establishing the Kobe University Brussels European Centre in 2010. Our flagship collaborations in Asia include Indonesia-based joint research on emerging and re-emerging infectious diseases.

In education, the CAMPUS Asia program fosters risk management experts in East Asia, while the KUPES program trains EU specialists. Student mobility is vital for a diverse learning environment, and our goal is an intake of 2000 international students and 1,200 outgoing students every year.

In April 2020, we opened two new liaison offices, in Seattle and Perth respectively. We now have a total of nine overseas offices on four continents. Using these bases alongside other initiatives, we aim to serve as a hub connecting overseas institutions, corporations, and public organizations based in Kobe and abroad.

http://www.office.kobe-u.ac.jp/ipiep/index_en.html

Education

Thinking globally

Kobe University aims to educate people who can identify and solve issues on a global scale. The “Kobe Standard” of education is based on the three skills of critical, collaborative and global thinking.

Academic calendar

The academic year at Kobe University is divided into 4 terms, known as “quarters”. This gives students more flexibility to participate in overseas exchange programs and internships.

Programs taught in English

At Kobe University, we are creating a truly international campus environment by making our comprehensive academic programs more accessible to people from around the world. In addition to providing English-taught classes and short-term summer programs, Kobe University also offers many degree programs completely in English, enabling students to attain a full masters or PhD qualification without the need for advanced Japanese language skills.

Examples of our English-language post-graduate programs:

(Most of our graduate schools offer PhD programs in English.)

Graduate School	Program name	Level
Law	GMAP in Law	Master's
Economics	International Master's Program in Economics	Master's
Economics	GMAP in Economics	Master's
Business Administration	GMAP in Management: SESAMI Program	Master's
Business Administration	SESAMI PhD Program	PhD
Science	Mathematics/Physics/Chemistry/Biology/Planetology	Master's PhD
Medicine	International Program for Medical Research	PhD
Health Sciences	ICHS Course	Master's PhD
Engineering	GMAP in Engineering	Master's
Agricultural Science	Kobe Global Graduate Program for Agricultural Science	Master's PhD
International Cooperation Studies	Special Course for Development Policy	Master's PhD

*GMAP: Global Master's Program

More Information

For a full list of English-taught programs and courses, see our International Programs brochure here: http://www.office.kobe-u.ac.jp/ipiep/materials/2021_International_Programs.pdf

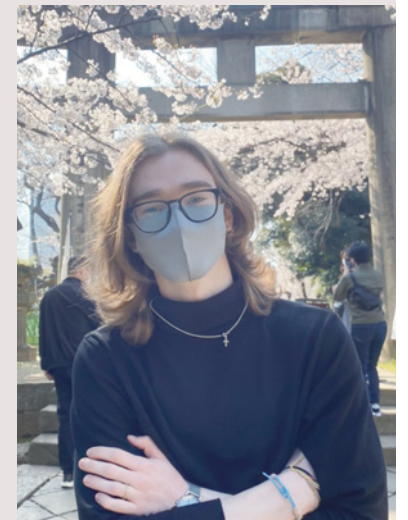
For detailed information on the admission process and living in Kobe, please see the Study in Kobe Guide: <https://www.kobe-u.ac.jp/documents/international/study-in-kobe/sik/2019studyinkobe.pdf>

Student Voices

Antonio Minev

*Faculty of Letters, Department of Humanities
Bulgaria*

Japan has an extremely unique culture which I really wanted to experience and do my own research on. Before I came to Japan, an acquaintance who had the opportunity to study here recommended Kobe University to me. I like how welcoming and accommodating the atmosphere is for international students. Even though all my classes are in Japanese and I'm the only foreigner, I haven't been treated differently and I don't feel any less valued. The teachers are very caring, supportive, and engaging. There are a lot of international students studying at Kobe University, which gives people the opportunity to experience different cultures, languages and values. Kobe University is an amazing place for people who want to experience Japan, but also do not want to feel that far from home. There is a lot of cultural exchange with, of course, Japanese people, but with other foreigners as well, which can be an extremely valuable experience that broadens the mind.



Bethany Meidinger

*Graduate School of International Cooperation Studies (GSICS)
USA*

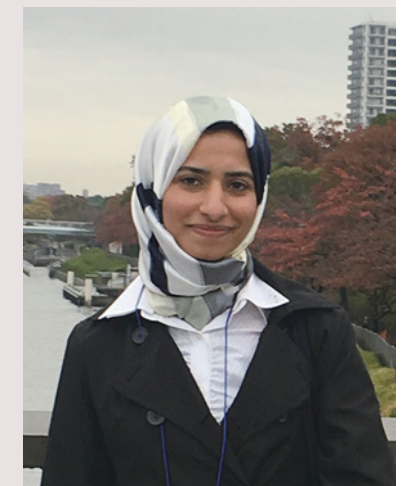
After witnessing the tragedy of the Great East Japan Earthquake, I knew that I wanted to continue my studies in Japan. I am currently studying for my Master's in Political Science. I like how collaborative Kobe University is and I feel fortunate that I have been able to study (and work) in multiple grad schools here. It has allowed me to vastly expand my network and so I have numerous professors and upperclassman with whom I can discuss my research. Right now, I am focused on achieving my dream of getting a PhD. I'm even planning on staying in Japan for it, but after that I would like to continue researching civic engagement throughout Asia and finding a way to meaningfully contribute to communities that are undergoing demographic changes. I volunteer with a few organizations including Prof. Alexander's Popoki Peace Project and wish more international students would get involved with the local community. Living here is a real once-in-a-lifetime opportunity and it adds an entirely different dimension to the study experience.



Mennaallah Alsayed

*Graduate School of Medicine
Egypt*

I chose to come to Japan because it is a safe and comfortable place to live. In addition, Kobe University provides an excellent atmosphere for study and doing research. My supervising professor has several publications in my field of interest, which is radiation oncology. When I contacted him, he kindly accepted me and was very supportive. The major challenge for me has been the Japanese language. However, the university provides an intensive course that is very helpful. I hope that I can finish my PhD and return to my home country to convey what I have learned to my colleagues. I would like to establish a scientific bridge between my departments here and in Egypt so we can do research and exchange experiences. I advise other students to come and study at Kobe University where they can feel supported and achieve their goals.



Support Services



Library for Social Sciences



Centennial Hall

University Libraries

Kobe University Library has a collection of about 3,770,000 bibliographical materials. The Library is comprised of the General Library and 9 branches divided by subject. They are located in the Rokkodai, Kusunoki, Myodani, and Fukae campuses. Each library provides a wide range of books and journals for students and faculty to advance their education and assist their research. They can also use the online delivery service to order books from other campus libraries. Moreover, convenience is improving for students, such as discussion-based learning at the Learning Commons. In 1999, "Digital Library System" was launched. It provides digitized collections for users inside and outside the campus via the internet (<http://www.lib.kobe-u.ac.jp/da/e-index.html>). "The Earthquake Disaster Materials Collection (EDMC)" holds over 60,000 materials related to the Great Hanshin-Awaji Earthquake. The EDMC is open to the public, with the aim of contributing to the development of earthquake-related research such as emergency restoration and disaster prevention measures.

<https://lib.kobe-u.ac.jp/en/>



Library for Science and Technology

Welfare

Medical Center for Student Health

The Medical Center for Student Health was established in April 1970. Services provided by the Center include an annual medical checkup for all students and staff, special checkups for people working with X-ray, radioisotope and other harmful substances, as well as a medical checkup for new international students. Emergency medical treatment is also available. There are doctors and nurses as well as counsellors to provide consultation and advisory services on physical and mental well-being. The Medical Center for Student Health also plays an important part in creating a safe and hygienic educational environment, through Health and Safety activities administered by qualified doctors.

<http://www.health.kobe-u.ac.jp/>

Support Center for Campus Life

This Center provides consultations and assistance in cases when a member of the University is experiencing disability-related difficulties or worries regarding their studies or university life. We will work with your department to meet your needs, including support for lectures, course registration, and examinations.

<https://www.kobe-u.ac.jp/SCCL/>

For International Students and Researchers

International Student Section in the Center for International Education (CIE)

The International Student Section in the CIE (formerly the International Student Center) was established as a university-wide research and teaching facility in April 1993. The Section assumes overall responsibility for international students, including the provision of Japanese language instruction, Japanese studies courses, advice on studying and living in Japan, career advice, and alumni networking. The Section also undertakes research and development to promote international study exchange programs, such as supporting Japanese students at Kobe University wishing to study overseas. In addition, the Section actively promotes international exchange programs in the local community, working with regional government agencies, local volunteer organizations, schools and companies.

<http://www.kisc.kobe-u.ac.jp/english/>

Accommodation

Kobe University has several dormitories for international students and researchers located within commuting distance. Kobe University International Residence and International House are exclusively for international students and researchers, however, other dormitories are for both international and Japanese students at Kobe University. The resident fees vary by room type. There are also boarding houses run by public and private organizations available for international students and researchers.

Rent Subsidy System

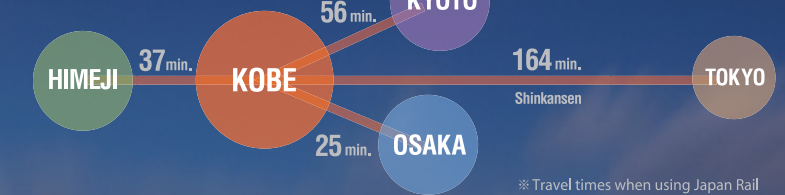
Kobe University has a rent subsidy system for eligible international researchers who agree to live in one of the public-run apartments designated by the University in the event there is no room available in either the International Residence or International House. Under this system, the University will pay a certain amount of the monthly rent. Residents themselves must pay utilities and other fees.

Residence	Commute	Map
International Residence	To Rokkodai Campus, 30-40 min. by Port-liner and Hankyu train	
International House (Fukae area)	To Rokkodai Campus, about 50 min. by train and bus To Fukae Campus, about 8 min. on foot	
Sumiyoshi International Student House (students only)	To Rokkodai Campus, 40-50 min. either on foot or by bus and train	
Sumiyoshi Residence (male students only)	To Rokkodai Campus, 40-50 min. either on foot or by bus and train	
Joshi-Ryo (female students only)	To Rokkodai Campus, 40-50 min. either on foot or by bus and train	
HAKUO Dormitory (Fukae area) (students only)	To Rokkodai Campus, about 50 min. by train and bus To Fukae Campus, about 10 min. on foot	
KOKUI Residence (students only)	To Rokkodai Campus, 30 min. by bus and on foot	

About Kobe

“Perched on a hillside sloping down to the sea, Kobe is one of Japan’s most attractive and cosmopolitan cities.” – Lonely Planet

Location



Kobe is the capital of Hyogo Prefecture, located in the western part of Japan’s main island of Honshu. Sandwiched between the Rokko mountain range to the north and the Inland Sea to the south, the city is blessed with a mild climate averaging 17.1°C (62.8F) with four seasonal changes. It has a population of over 1.5 million including 43,000 foreign residents from as many as 132 different countries.

Accessible by land, air and sea, Kobe is a hub for other domestic and international destinations: Kyoto, Himeji, Osaka and Nara are all within easy reach, and Tokyo is a short bullet train or plane ride away.

Kobe University’s four campuses and accommodation are all easily accessed from the city center of Sannomiya by bus and train.

A multicultural port city

Ever since Japan was opened to the world, Kobe has been a cosmopolitan port city where people, goods, and information from around the globe are in constant motion. The area is now home to a rich blend of Japanese tradition

and international influences. In the city center you can find Ikuta Shrine, founded in the third century AD, with historical foreign residences and Japan’s oldest mosque just a short walk away. On the other side of the mountain range lies Arima Onsen, one of Japan’s oldest hot spring resorts.

Kobe’s history of cultural exchange has contributed to its diverse arts scene: it is the birthplace of Japanese jazz, and in 2008 Kobe joined UNESCO’s Creative Cities Network as a City of Design. The city’s cuisine also shows culinary influence from around the world. As well as the renowned Kobe beef and traditional Japanese sake breweries, Kobe is also well-known for its bustling Chinatown near the Port of Kobe, numerous bakeries and European-inspired sweets.

Located between the mountains and the sea, Kobe is an ideal location to explore Japan’s natural surroundings. Hiking trails and cable cars from the city provide transport to the peaks of the Rokko Mountains, the best place to experience Kobe’s famous night views. A few kilometers west from the Port of Kobe the beaches of Suma and Maiko are popular for watersports.

Industry and innovation

Kobe and the surrounding area suffered heavy damage from the 1995 Great Hanshin-Awaji Earthquake. In the following years, with support from people throughout Japan and the world, Kobe’s citizens have rebuilt the city into a hub for business and industry.

Traditionally home to heavy industries such as shipbuilding, iron and steel, the city is now a hub for IT, science and technology. At the center of this is the Kobe Biomedical Innovation Cluster on Port Island where around 350 research institutes, corporations and universities are working together to develop state-of-the-art medical technology and research into integrated medical-related industries. The Cluster is home to the new supercomputer Fugaku, which was named the fastest in the world in 2020. A few kilometers west lies SPring-8, the world’s largest third-generation synchrotron radiation facility.

Kobe has a high concentration of foreign-affiliated companies and international organizations: branches of the World Health Organization and the Japan International Cooperation Agency are both based in the center.

Faculties & Schools



Faculties

	Courses
Letters http://www.lit.kobe-u.ac.jp/english/index.html	Humanities
Global Human Sciences http://www.fgh.kobe-u.ac.jp/en	Global Cultures Human Development and Community Environment and Sustainability Child Education
Law http://www.law.kobe-u.ac.jp/english.html	Law (includes Politics)
Economics http://www.econ.kobe-u.ac.jp/en/	Economics
Business Administration https://b.kobe-u.ac.jp/en/	Business Administration
Science http://www.sci.kobe-u.ac.jp/english/index.htm	Mathematics Physics Chemistry Biology Planetology
Medicine http://www.med.kobe-u.ac.jp/en/index.html http://www.ams.kobe-u.ac.jp/en	Medicine Health Sciences
Engineering http://www.eng.kobe-u.ac.jp/en/	Architecture Civil Engineering Electrical and Electronic Engineering Mechanical Engineering Chemical Science and Engineering Computer Science and Systems Engineering
Agriculture http://www.ans.kobe-u.ac.jp/english/index.html	Agricultural Engineering and Socio-Economics Bioresource Science Agrobioscience
Oceanology* http://www.ocean.kobe-u.ac.jp	Oceanology

*Graduates of the Faculty of Oceanology's Maritime Officer License Course can move on to the six-month Sea Training Course.



Graduate Schools

Kobe University has 15 graduate schools covering a wide range of disciplines.
All courses are offered at both masters and doctoral levels unless otherwise specified.

Courses

Humanities http://www.lit.kobe-u.ac.jp/english/index.html	Human Cultural Studies Human Social Dynamics
Intercultural Studies http://web.cla.kobe-u.ac.jp/graduate-en/	Cultural Interaction Culture and Globalization
Human Development and Environment http://www.h.kobe-u.ac.jp/en/	Human Development Human Environmental Science
Law http://www.law.kobe-u.ac.jp/english.html	Professional Degree Program: Professional Legal Studies Law and Politics
Economics http://www.econ.kobe-u.ac.jp/en/	Economics
Business Administration https://b.kobe-u.ac.jp/en/	Business Administration Advanced Management
Science http://www.sci.kobe-u.ac.jp/english/index.htm	Mathematics Physics Chemistry Biology Planetology
Medicine http://www.med.kobe-u.ac.jp/en/index.html	Biomedical Sciences (Masters course only) Medical Sciences (Doctoral course only)
Health Sciences http://www.ams.kobe-u.ac.jp/en/	Nursing Biophysics Rehabilitation Science Public Health
Engineering http://www.eng.kobe-u.ac.jp/en/	Architecture Civil Engineering Electrical and Electronic Engineering Mechanical Engineering Chemical Science and Engineering
System Informatics http://www.csi.kobe-u.ac.jp/english	Systems Science Information Science Computational Science

Courses

Agricultural Science http://www.ans.kobe-u.ac.jp/english/index.html	Agricultural Engineering and Socio-Economics Bioresource Science Agrobioscience
Maritime Sciences http://www.maritime.kobe-u.ac.jp/en/index.html	Maritime Sciences
International Cooperation Studies http://www.gsics.kobe-u.ac.jp/	Economic Development and Policies International Cooperation Policy Studies Regional Cooperation Policy Studies
Science, Technology and Innovation http://www.stin.kobe-u.ac.jp/en/index.html	Science, Technology and Innovation

Affiliated Research Centers

Intercultural Studies	Research Center for Promoting Intercultural Studies (Promis)
Science	Center for Planetary Science
Medicine	Institute for Experimental Animals Center for Infectious Diseases
Engineering	Research Center for Interfacial Science (RCIS) Complex Fluid and Thermal Engineering Research Center (COFTEC) Research Center for Advanced Smart Materials (RCASM) Resilient Structure Research Center (ReSRC) Medical Device Fabrication Engineering Center (MeDFEC) Center for Resilient Design (CResD) Graphics Literacy Education and Research Center Social Implementation of Renewable Energy research Center (SIREC)
Agricultural Science	Food Resources Education and Research Center Center for Regional Partnership Research Center for Food Safety and Security (RCFSS)
Maritime Sciences	International Maritime Research Center (IMaRC)

Centers, Institutes & Facilities

Core Organizations for Multidisciplinary Promotion of Research and Education

- **Biosignal Research Center**
<http://www.biosig.kobe-u.ac.jp/en/index.html>
- **Research Center for Inland Seas**
<https://www.research.kobe-u.ac.jp/rcis-kurcis/e.html>
- **Research Center for Urban Safety and Security**
<http://www.rcuss.kobe-u.ac.jp/English/index-e.html>
- **Molecular Photoscience Research Center**
http://www.research.kobe-u.ac.jp/mprc/about/index_e.html
- **Kobe Ocean-Bottom Exploration Center**
<http://www.k-obec.kobe-u.ac.jp/>
- **Kobe University Center for Social Systems Innovation**
<http://www.cfsi.kobe-u.ac.jp/english/index.html>
- **Center for Mathematical and Data Sciences**
<http://www.cmds.kobe-u.ac.jp/en/>
- **Center for Computational Social Science**
<http://ccss.kobe-u.ac.jp/en/index.html>
- **Engineering Biology Research Center**
<http://www.egbrc.kobe-u.ac.jp/en/index.html>
- **Research Center for Membrane and Film Technology**
<http://www.research.kobe-u.ac.jp/eng-membrane/center/index-eng.html>
- **Center for Advanced Medical Engineering Research & Development**
<http://www.advm.kobe-u.ac.jp/en/index.html>

Core Organizations for Cross-campus Management and Support

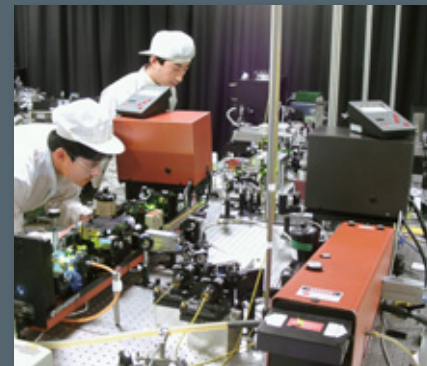
- **Information Science and Technology Center**
<http://www.istc.kobe-u.ac.jp/>
- **Research Facility Center for Science and Technology**
<http://www.csrea.kobe-u.ac.jp/>
- **Center for Environmental Management**
<http://www.research.kobe-u.ac.jp/cema/>
- **Education Center on Computational Science and Engineering**
<http://www.eccse.kobe-u.ac.jp/>
- **Medical Center for Student Health**
<http://www.health.kobe-u.ac.jp/>
- **Career Center**
<http://www.career.kobe-u.ac.jp/>
- **Support Center for Campus Life**
<http://www.kobe-u.ac.jp/SCCL/index.html>
- **Kobe University Admission Center**
<http://www.edu.kobe-u.ac.jp/admc-info/index.html>
- **Center for Maritime Education and Research**

Institutes

- **Institute of Promoting Academic Research Programs**
<https://www.kobe-u.ac.jp/en/research/institute/index.html>
- **Institute for Promotion of Higher Education**
<http://www.iphe.kobe-u.ac.jp/>
- **Institute for Promoting International Partnerships**
https://www.office.kobe-u.ac.jp/ipiep/partners_en.html



Biosignal Research Center



Molecular Photoscience Research Center

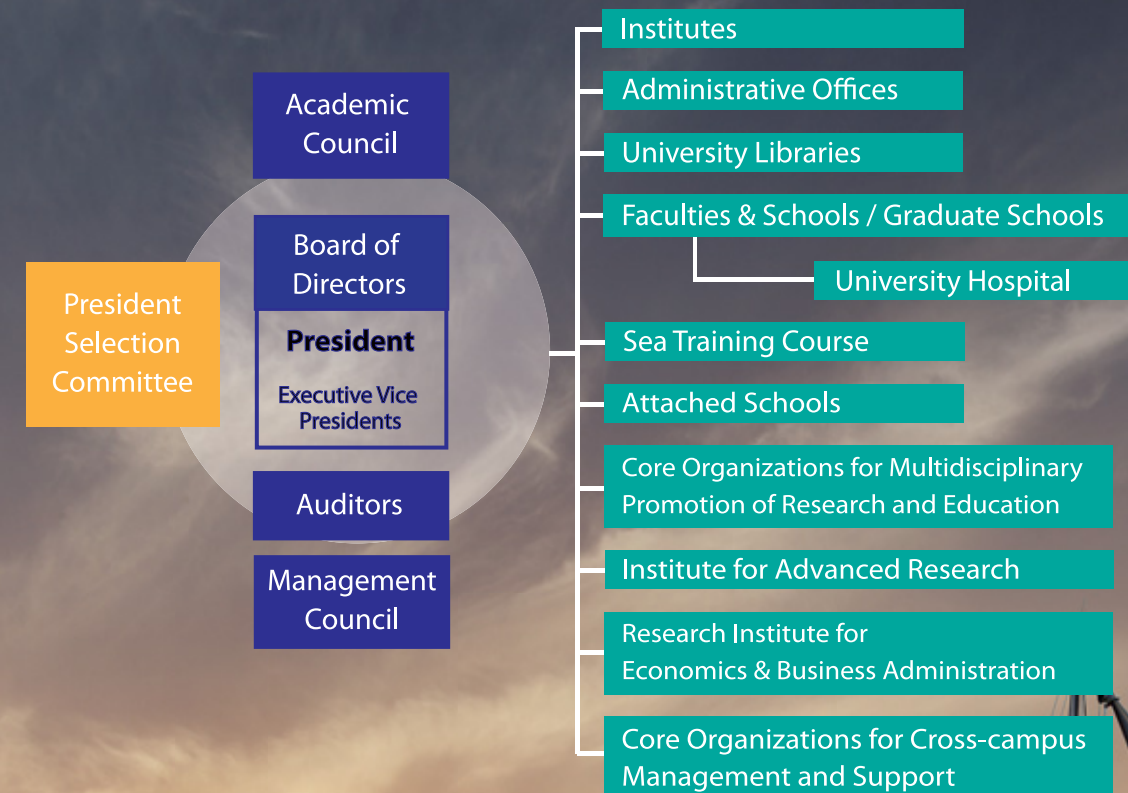


Information Science and Technology Center (ISTC)



Institute for Promotion of Higher Education

Organization Chart



A Maritime Sciences training boat, the cruiser yacht "Kleiner Berg"