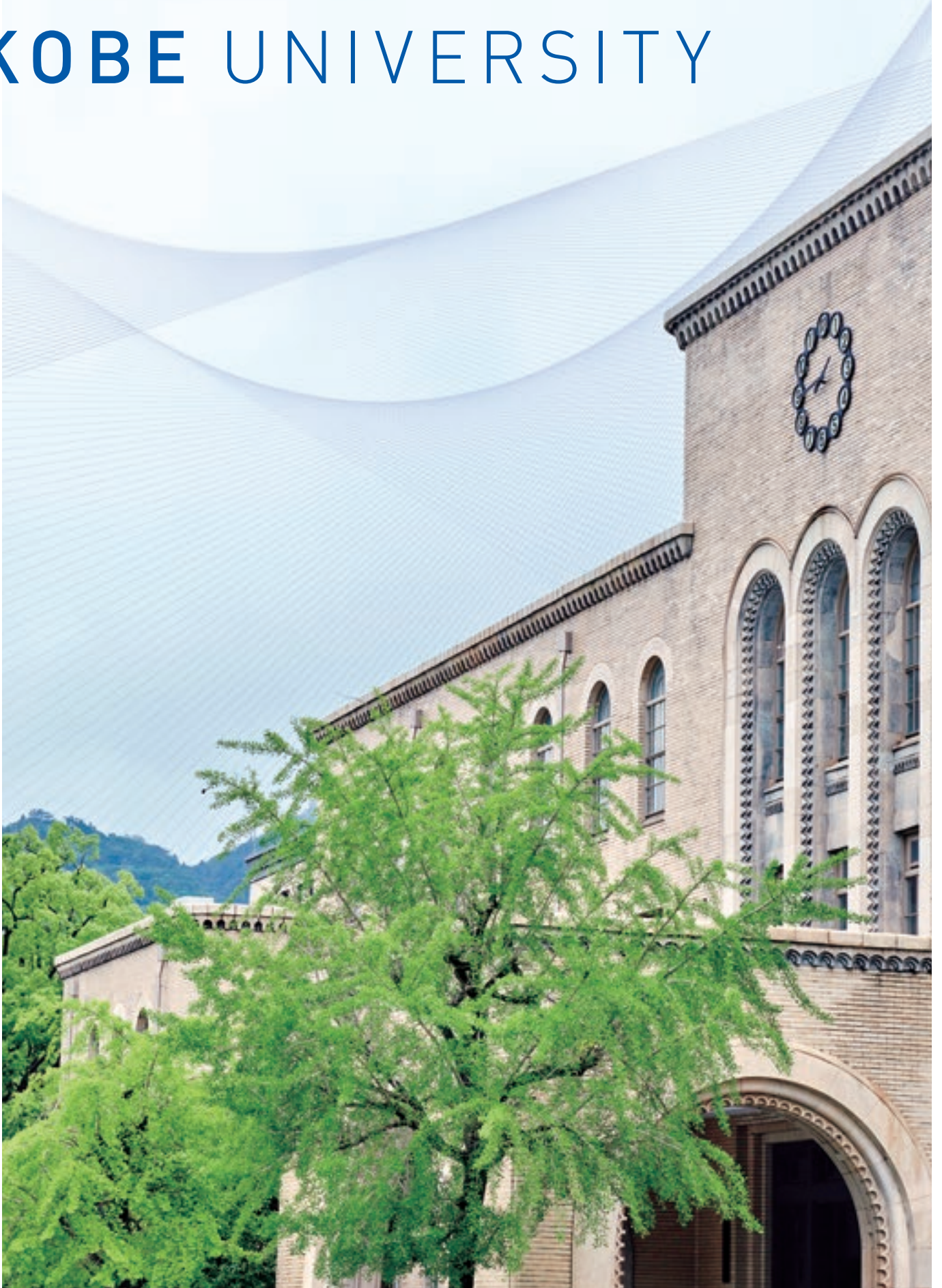


2023

KOBE UNIVERSITY



From the Past to the Future, From Kobe to the World

Located in a vibrant international port city
Nestled between the mountains and the sea
Kobe University draws upon over 120 years of history
To cultivate globally-minded, talented individuals
Bringing diverse people together from around the world
To create innovative, multidisciplinary solutions
That will shape the future of our planet



MISSION

Kobe University, working in a spirit of integrity, freedom, and cooperation in keeping with its open and cosmopolitan culture and environs, aims to contribute to the global community through the creation of knowledge founded on universal values and the fostering of rich understanding and strong leadership skills.

VISION

Towards a global hub for the multidisciplinary co-creation of research and education that cultivates profound knowledge and outstanding innovators.

Kobe University is developing into a global hub to meet the needs of a post-pandemic, knowledge-based digital society. To achieve this aim, we are cultivating invaluable human resources who can resolve current and future societal issues; bringing about innovation through the creation of new knowledge and values. We harness this intellectual and creative strength to pursue the truth through our fundamental research, as well as working together with local communities on applied research.

MESSAGE FROM THE PRESIDENT



Kobe University President
FUJISAWA Masato

Contributing to global society by cultivating new knowledge and people

Located in an international port city, Kobe University celebrated its 120th anniversary in 2022. Since our establishment, we have continued to provide education and conduct research in the spirit of integrity, freedom and cooperation, honoring our ideal of fostering 'harmony between theory and reality'. As a comprehensive research university with ten faculties and fifteen graduate schools, Kobe University's great strength lies in its open research environment, which is based on mutual cooperation between the humanities, social sciences, natural sciences and life sciences. The collaborations produced from this synergy promote multidisciplinary co-creative research. It is our main mission to contribute to society through the results of such world-leading, outstanding research. Therefore, our aims are to strengthen collaborations between industry, government and academia for the mutual development of Kobe University and society; becoming a 'global hub for the multidisciplinary co-creation of research and education that cultivates profound knowledge and outstanding innovators'.

Kobe University is currently focusing on a management growth strategy model in which knowledge, human resources, and funds are virtuously circulated between the university and society. An important part of this is the "Digital Bio & Life Science Research Park" initiative. Centered on the Social System Innovation Research Base, which aims to solve social problems and contribute to society, this initiative will strengthen mutual collaboration between the following bases that embody the university's strengths: the Bioproduction Research Base, Advanced Membrane Research Base, Medical Engineering Research Base, and the Health and Longevity Research Base. In addition, we are continuing to collaborate and co-create with society in order to cultivate and implement new knowledge.

Humankind is currently facing a variety of global issues including problems related to the environment, poverty, human rights, peace, health and welfare. Universities must strive to cultivate comprehensive knowledge and strengthen their social implementation abilities in order to resolve these issues.

To maintain our global standing, we will cultivate new outstanding knowledge and people to establish Kobe University as a global center for multidisciplinary research and education, while making every effort to achieve sustainable growth and development. I hope that this brochure will give people overseas an insight into Kobe University's vision and activities, bringing about new connections to realize a better world for all.

OUR GROWTH STRATEGY

Enhancing mutual development between university and society

A virtuous cycle of knowledge, human resources and funds flowing between the university and society is vital for sustaining Kobe University's growth as a global hub for multidisciplinary co-creation. Conducting research that has high social and economic value not only raises stakeholders' trust in our institution but also increases research revenue. This revenue in turn will bolster Kobe University's outstanding education and research capabilities, contributing towards the education of talented future generations who will shape tomorrow's world.



Digital Bio & Life Science Research Park Initiative

Kobe University's growth strategy model, the 'Digital Bio & Life Science Research Park Initiative', is a vital concept for achieving our ideal of mutual, synergistic growth between university and society. Consisting of 5 cutting-edge research bases, the initiative aims to find multidisciplinary solutions to global issues that cannot be solved by a single research field, creating overall synergies through collaborations among Japan's top-class research centers, and advancing the development of future flagships.



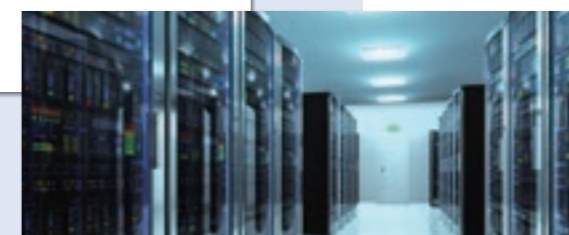
Bioproduction Research Base

A cutting-edge platform centered on a fusion of bio-digital technologies. Building upon Kobe University's extensive achievements in advanced biotechnology and our strong collaborative relationships with related organizations, this new platform will drive the bioeconomy. It will promote industry-academia-government R&D collaborations to bring about innovation, implementing various Kobe University-developed technologies for bioproducing useful substances.



Medical Engineering Research Base

This research base will seamlessly integrate the results of interdisciplinary research in medical engineering to develop globally competitive advanced medical devices, covering all stages of development from needs identification, solution conceptualization and validation, to commercialization strategies. The base will also foster human resources who can contribute toward these developments.



Social System Innovation Research Base

To solve the myriad issues facing society, it is necessary to bring innovation to the social system itself so that scientific and technological solutions to these issues will be accepted. We can view society as having 3 layers: 1. Social systems, 2. Markets and organizations and 3. Technology, environment and resources. We will utilize the following 2 pillars; business platforms and public policy/welfare to bridge the gaps between these layers, to establish a world-class research base of social system innovation.

Japan's first and only advanced research center specializing in membrane engineering will promote multidisciplinary R&D on innovative membrane technologies, contributing to the establishment and application of fundamental membrane science. It aims to become an internationally-renowned center for membrane engineering research; solving global environmental and energy issues and speeding up the adoption of carbon neutral technologies.

Advanced Membrane Research Base



Based on the University's wide-ranging outlook and accumulated expertise on health and aging, this base seeks to enhance the well-being of society as a whole through cooperative efforts that harness the distinctive strengths of industry, government, academia and citizens. With its "well-being cross-disciplinary co-creation model", it aims to become a world-class center for promoting well-being that will lead the transition towards a more sustainable society.

Health and Longevity Research Base



HISTORY

A Comprehensive National University with Over 120 Years of Tradition

Kobe University has a long history spanning over 120 years. Its roots can be traced back to the Kobe Higher Commercial School that was established in 1902. It became known as Kobe University in 1949 when seven institutions were combined into one university with 6 faculties. Nowadays, Kobe University has 10 faculties and 15 graduate schools covering a diverse range of academic fields.



1902

1949

1964

1966

1967

1992

1994

1995

2003

2010

2016

2022

▶ Kobe Higher Commercial School

Established as the second government-run higher commercial school in Japan. This was the starting point for the founding of Kobe University.
This is the origin of Kobe University's Faculty of Law, Faculty of Economics, and School of Business Administration.

▶ Kobe University

Kobe University was established encompassing seven former government-run institutions of higher education. Initially, the university started with the six faculties below.



School of Medicine

Faculty of Agriculture

University Hospital

Faculty of Intercultural Studies

Faculty of Health Sciences in the School of Medicine

Graduate School of International Cooperation Studies

Faculty of Maritime Sciences

Graduate School of System Informatics

Graduate School of Science, Technology and Innovation

120th Anniversary

Faculty	Faculty of Letters Faculty of Global Human Sciences Faculty of Law	Faculty of Economics School of Business Administration Faculty of Science	School of Medicine Faculty of Engineering Faculty of Agriculture	Faculty of Oceanology
Graduate School	Graduate School of Humanities Graduate School of Intercultural Studies Graduate School of Human Development and Environment Graduate School of Law Graduate School of Economics Graduate School of Business Administration Graduate School of Science Graduate School of Medicine		Graduate School of Health Sciences Graduate School of Engineering Graduate School of System Informatics Graduate School of Agricultural Science Graduate School of Maritime Sciences Graduate School of International Cooperation Studies Graduate School of Science, Technology and Innovation	

RESEARCH

Innovating for the future

As a growing hub of world-class knowledge and expertise, Kobe University provides an outstanding research environment that facilitates multidisciplinary collaboration across all fields, from humanities and social sciences to natural sciences and biomedical sciences.

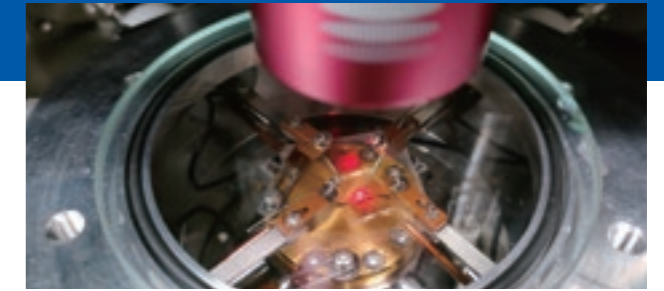
We strive to address the challenges facing the world today, including natural disasters, climate change, water shortages, environmental issues and diseases. Through our varied initiatives and focused research collaborations, we are creating and implementing new technologies and values that will contribute towards a more sustainable and advanced future for humanity.



Stress due to adverse and demanding conditions, as well as aging, have devastating impacts on mental and physical functions. We aim to elucidate the biological basis underlying stress-induced mental and physical alterations, the aging of brain functions, and resilience to stress and aging. This will enable us to develop innovative therapeutic drugs for mental and physical illnesses such as depression.



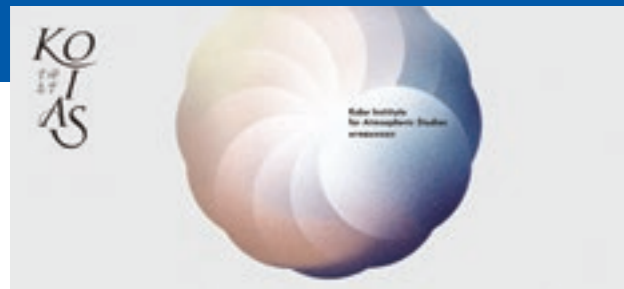
Graduate School of Medicine
Prof. FURUYASHIKI Tomoyuki



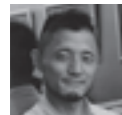
We have been developing nanomaterials with novel optical functions and related nanodevices, and exploring their applications in electronics, photonics, photochemistry and biophotonics. We conduct experimental studies on the developed nanomaterials using cutting-edge lab facilities including optical micro-spectroscopy, electrical measurements and electron microscopy.



Graduate School of Engineering
Associate Prof.
SUGIMOTO Hiroshi



In 2022, together with my colleagues, I co-founded the Kobe Institute for Atmospheric Studies (KOIAS), which aims to establish and to develop *Atmospheric Studies* as a new interdisciplinary field. Our research projects span a broad cross-cultural spectrum, exploring various atmospheric phenomena, which include two concepts that I am interested in: *Geist* (in German) and *Ki* (in Japanese).



Graduate School of Humanities
Associate Prof. HISAYAMA Yuho



My research interests include platform businesses employed by major high-tech companies such as Google, Apple, Meta, Amazon, Microsoft, Uber, and Airbnb. I am engaged in platform research from a wide range of perspectives, including marketing strategies for profit maximization and competition policies to create a better society.



Graduate School of Business Administration
Prof. ZENNYO Yusuke



Epigenetic regulation refers to changes in gene expression that are not determined by the DNA sequence. We are investigating the relationship between epigenetics and gene expression, particularly how epigenetics are related to agricultural traits such as heterosis, vernalization, and stress response (including defensive and salt stress responses in cruciferous vegetables).



Graduate School of Agricultural Science
Associate Prof. FUJIMOTO Ryo



I conduct research on the meteorological aspects of offshore wind development. I have been recently involved in national projects such as creating an offshore wind resource map of the Japanese coast (NeoWins) and establishing offshore wind observation methods that use remote sensing technologies (e.g., Scanning LiDAR, Floating LiDAR).



Graduate School of Maritime Sciences
Prof. OHSAWA Teruo



A variety of organisms live on Earth, interacting with each other. Their ecology enables us to better understand the world around us. Focusing on plant-animal-microorganism interactions, we study the causes and consequences of sexual differences within ecological communities consisting of many species.



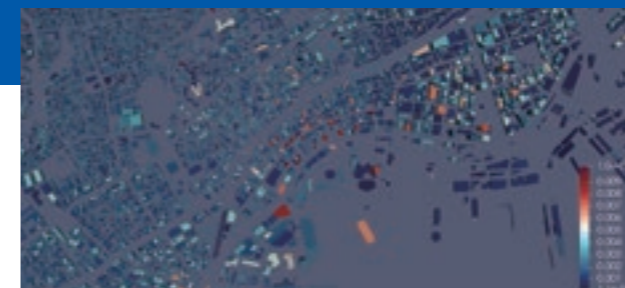
Graduate School of Science
Associate Prof. TSUJI Kaoru



The Orthopaedic department focuses on basic research, especially on regenerative medicine to repair bone and cartilage using vascular stem cells or adipose-derived stem cells. We have also been conducting clinical research targeting sports medicine and joint regeneration, using new technology such as robotic surgery and novel instruments.



Graduate School of Medicine
Prof. KURODA Ryosuke



I am making next-generation hazard maps using supercomputers and digital transformation engineering. By having supercomputers calculate numerous hazard scenarios, we can obtain a better understanding of the probability of damage to urban structures. However, it is challenging to build a digital twin of city because of their complexity. The key technologies required to achieve this are data processing and integration.



Research Center for Urban Safety and Security
Prof. OISHI Satoru



Solar-driven photocatalysis for the production of renewable energy, especially hydrogen gas, or high-value-added chemicals is one of the most promising ways to achieve sustainable development and a circular economy. I have been applying this technology to tackle global energy and waste issues.



Molecular Photoscience Research Center
Prof. TACHIKAWA Takashi

EDUCATION

Diverse programs to suit the varied needs of international students

Kobe University offers a wide variety of programs, including degree programs provided in English, short-term language programs, and Japanese cultural studies programs.

In addition to Japanese language education, we also provide comprehensive support to enable international students to get the most out of their studies and research, including advice on student life and studying, job placement support, and community exchange activities.



English Courses

[Learn more](#)



The graduate schools listed below offer programs conducted entirely in English, enabling students to acquire a full Masters or PhD qualification in Japan without the need for advanced Japanese language abilities.

- Law (Master)
- Business Administration (Master/PhD)
- Economics (Master)
- International Cooperation Studies (Master/ PhD)
- Science (Master)
- Agricultural Science (Master/ PhD)
- Medicine (PhD)
- Health Science (Master/PhD)



Japanese Classes

[Learn more](#)



Kobe University offers Japanese language and Japanese studies courses for international students to suit various levels of language ability and study aims. Students can choose classes that meet their needs, from the three types of classes listed below.

- Integrated Japanese Language Classes (Elementary~Superior)
- Japanese Language and Japanese Studies Classes (Advanced)
- Intensive Japanese Language Course (Elementary~Intermediate)



Short-term Japanese Language & Culture Programs

[Learn more](#)



Kobe University also offers short-term programs on Japanese language and culture for students studying Japanese overseas, including those studying in non-partner universities. These programs consist of Japanese classes and Area Studies classes designed to explore Kobe and neighboring areas.

INTERNATIONAL

Global Partnerships

Kobe University has a long history and rich traditions borne from its location in the scenic cosmopolitan port city of Kobe. Kobe has served as a gateway to Japan since the opening of its port to the world in 1868, providing fertile ground for global networks to flourish. Consequently, Kobe University has produced many graduates who have respect for diverse values, a deep understanding of different cultures and outstanding communication skills.

At present, Kobe University has active academic partnerships covering research and education with 370 institutions in 64 countries and regions across the globe. To further strengthen these valuable cooperative relationships, we have established 8 overseas offices centred on our 3 main strategic bases in Brussels (the capital of the European Union, Belgium), Beijing (China), and Seattle (USA) respectively. Through international collaboration, Kobe University strives

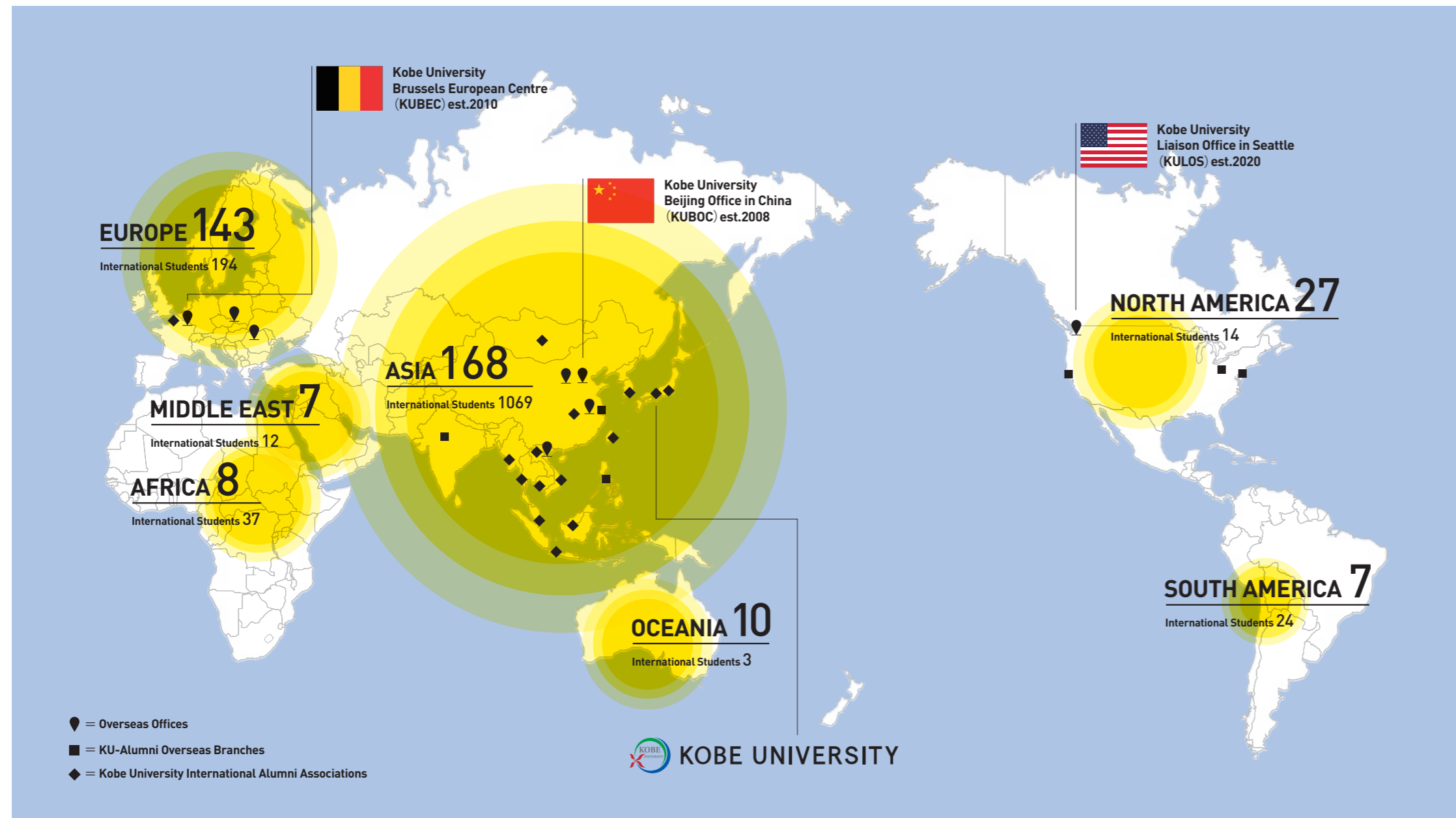
to create new academic values and contribute towards the comprehensive and sustainable development of society. In addition to providing high quality education to our international students, we also offer career support through our overseas alumni and graduate networks; cultivating practical, global-minded individuals who can contribute to the international community.

[More about global partnerships](#)



KU-Alumni

In the build-up to Kobe University's 120th anniversary in 2022, we established 'KU-Alumni', an all-campus organization connecting all the people who make up the Kobe University 'Family': including graduates, current students, university faculty and staff (including former employees), as well as members of students' families. From now on, all of Kobe University's research, education, international exchanges and social contribution activities will be supported under the inclusive 'One Kobe Family' umbrella. By maintaining and strengthening our support for each alumni association, and promoting mutual exchange and study between our members in Japan and abroad, we aim to build a global community that transcends generations and borders.

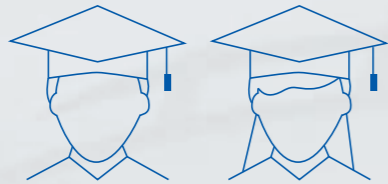


(As of November 1, 2022)

Overseas Offices	8
KU-Alumni Overseas Branches	6
Kobe University International Alumni Associations	15
International Students	1353
(249 Undergraduates, 1104 Graduates)	
Partner Institutions	370

AT A GLANCE

Students



15,869

Undergraduate Students
11,425

Graduate Students
4,444

International Students
1,229

Ranked
5th

National University Admissions Criteria

As of May 1, 2022

Faculty and Staff

4,145

Teaching staff **1,658**

Administrative Staff (including technical staff and nurses) **2,487**

International faculty and staff **92**

Student-to-Faculty Ratio **9.6 : 1**

As of May 1, 2022

Faculties

10

Graduate Schools

15

Research Centers

14



Campus

4 main campuses and other locations

1,190,334 m²



Academic Calendar

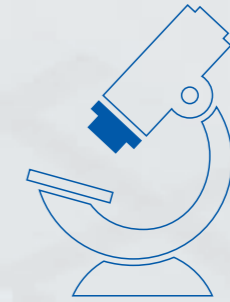
2 Semesters, **4** Quarters

Spring (Apr.-Sep.), Fall (Oct.-Mar.)

Research

Joint Research & Commissioned Research

5,691 (2016-2020)



Ranked
15th

High-Impact Papers from Japanese institutions

Papers stored on Web of Science

9,619 (2016-2020)

International Co-authored Papers on Web of Science

3,159 (33%) (2016-2020)

Papers in the Top 10% on Web of Science

941 (2016-2020)

University start-up companies

41

Libraries

9



Books

3,782,627

Ranked
7th

No. of Books held by National Universities

Finance

Total Asset **208 billion JPY**

Total Expenditure **81 billion JPY**

Total Revenue **84 billion JPY**

External Fund **18 billion JPY**

International

Partner Institutions **370**

Overseas Offices **8**

Rankings

QS World University Rankings 2023

► **13th in Japan** **363th in the World**

THE Japan University Rankings 2022

► **14th**

THE Impact Rankings 2022

► **3rd in Japan**

101-200th in the World

ABOUT KOBE

“Perched on a hillside sloping down to the sea, Kobe is one of Japan’s most attractive and cosmopolitan cities.”
– Lonely Planet

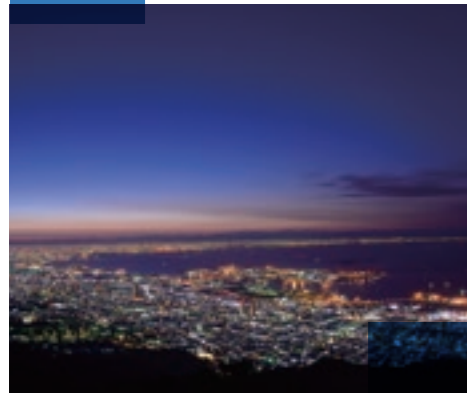
Kobe Kitano Ijinkan-Gai



Rokko Mountain



Ikuta Shrine



Night View



Japanese sake



Kobe beef



Arima Onsen hot spring



Chinatown

A cultured international port city combining convenience with stunning nature

Kobe is the capital of Hyogo Prefecture, located in the western part of Japan’s main island of Honshu. Sandwiched between the Rokko mountain range to the north and the Inland Sea to the south, the city is blessed with a mild climate averaging 17.1°C (62.8F) with four seasonal changes. It has a population of over 1.5 million including over 51,000 foreign residents from all over the world.

Accessible by land, air and sea, Kobe is a hub for other domestic and international destinations: Kyoto, Himeji, Osaka and Nara are all within easy reach, and Tokyo is a short bullet train or plane ride away.

Kobe University’s four campuses and accommodation are all easily accessed from the city center of Sannomiya by bus and train.

Culture and Attractions

Ever since Japan was opened to the world, Kobe has been a cosmopolitan port city where people, goods, and information from around the globe are in constant motion. The area is now home to a rich blend of Japanese tradition and international influences. In the city center you can find Ikuta Shrine, founded in the third century AD, with historical foreign residences and Japan’s oldest mosque just a short walk away. On the other side of the mountain range lies Arima Onsen, one of Japan’s oldest hot spring resorts. Kobe’s history of cultural exchange has contributed to its diverse arts scene: it is the birthplace of Japanese jazz, and in 2008 Kobe joined UNESCO’s Creative Cities Network as a City of Design. The city’s cuisine also shows culinary influence from around the world. As well as the renowned Kobe beef and traditional Japanese sake breweries, Kobe is also well-known for its bustling Chinatown near the Port of Kobe, numerous bakeries and European-inspired sweets.

Located between the mountains and the sea, Kobe is an ideal location to explore Japan’s natural surroundings. Hiking trails and cable cars from the city provide transport to the peaks of the Rokko Mountains, the best place to experience Kobe’s famous night views. A few kilometers west from the Port of Kobe the beaches of Suma and Maiko are popular for watersports.

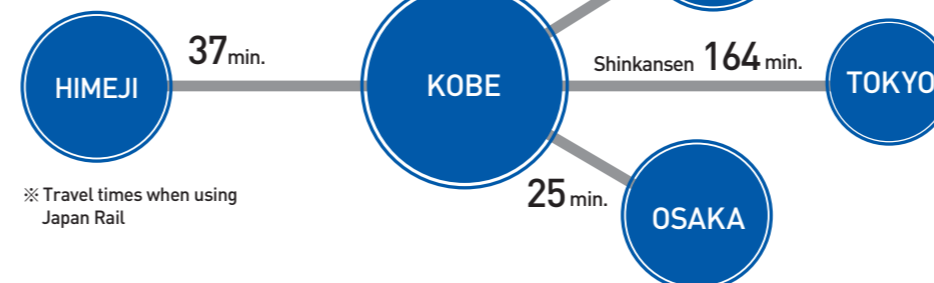
Industry and innovation

Traditionally home to heavy industries such as shipbuilding, iron and steel, Kobe and the surrounding area suffered heavy damage from the Great Hanshin-Awaji Earthquake in 1995. In the following years, Kobe’s citizens rebuilt the city into a hub for business and industry with support from people throughout Japan and the world. Nowadays, Kobe provides an attractive environment for the development of key forward-thinking innovations with strategic focus on the IT, aerospace, medical and new energy industries.

At the Kobe Biomedical Innovation Cluster on Port Island, around 380 research institutes, corporations and universities are working together to develop state-of-the-art medical technology and research into integrated medical-related industries. The Cluster is home to the new supercomputer Fugaku, which was named the fastest in the world in 2020. From 2021, access to Fugaku has been granted to different industries and research institutes across a range of fields. Kobe University researchers also enjoy the privilege of access to this cutting-edge supercomputer.

Kobe has a high concentration of foreign-affiliated companies and international organizations: branches of the World Health Organization and the Japan International Cooperation Agency are both based in the center.

Location



※ Travel times when using Japan Rail

How to access Kobe University





KOBE UNIVERSITY

1-1, Rokkodai-cho, Nada-ku, Kobe, 657-8501, JAPAN

<https://www.kobe-u.ac.jp/en>

©Kobe University, All Rights Reserved.